



COMMUNITY GUIDE & BUSINESS DIRECTORY



Community Focused. Family Owned.

Our service
reflects your love.

Pre-Planning | Immediate Need | Grief Support

Bringing comfort to people during a difficult time by creating personalized, meaningful ceremonies that celebrate the life of a loved one.



Our family helping yours when you need it most.

Spicer-Mullikin, family-owned since 1906



◆ 1000 N. DuPont Parkway
New Castle, DE 19720
(302) 328-2213

◆ 121 W. Parl Place
Newark, DE 19711
(302) 368-9500

◆ 214 Clinton Street
Delaware City, DE 19706
(302) 834-4524

◆ 275 E. Main Street
Middletown, DE 19709
(302) 378-0300



WHAT'S INSIDE

1-2	NEW CASTLE COUNTY FACTS AND STATS	20	A MESSAGE FROM THE MIDDLETOWN MAYOR	41	ORGANIZATIONS
6	IMPORTANT PHONE NUMBERS	21-24	A SHORT HISTORY OF MIDDLETOWN, ODESSA + TOWNSEND	42	TRANSPORTATION
8	BUSINESS ASSISTANCE	26	A MESSAGE FROM THE ODESSA MAYOR	43	MOTOR VEHICLES
9	TAX ADVANTAGES IN DELAWARE	28	MIDDLETOWN GOVERNMENT	45-46	SCHOOLS, COLLEGES + LOCAL HOUSES OF WORSHIP
10	A MESSAGE FROM THE MACC PRESIDENT	29	PERMITS, TAXES + UTILITIES	47-51	ATTRACTIONS, PERFORMING ARTS, ANNUAL EVENTS, M.O.T. AREA PARKS, RECREATION & CULTURAL ACTIVITIES
12-13	MIDDLETOWN AREA CHAMBER OF COMMERCE	34-35	M.O.T. AREA MAP	53-65	MEMBERSHIP SERVICES DIRECTORY
15	MEMBERSHIP BENEFITS	38-39	ODESSA, TOWNSEND + NEW CASTLE COUNTY INFO	66	A MESSAGE FROM THE EXECUTIVE DIRECTOR
17	NETWORKING GROUPS	40	A MESSAGE FROM THE TOWNSEND MAYOR		

ACKNOWLEDGMENTS

PHOTOGRAPHY

Cover Photos and photos throughout supplied by MACC, Andreas Stahl, John Falla, Avi Gold.

LAYOUT

Designed by Launch Design Collective, LLC. LDCandCo.com

NEW CASTLE COUNTY FACTS + STATS

Located in the Mid-Atlantic section of the eastern seaboard, Delaware is bordered by the Atlantic Ocean and the Delaware Bay, and by New Jersey, Pennsylvania and Maryland.

The northern most county, New Castle, offers easy access to the major metropolitan areas of the Northeast.

CLIMATE

Middletown has a moderate climate, with an average monthly temperature range of 32°F (January) to 76°F (July) with four distinct seasons. Rainfall averages 45" per year, and snowfall 20". The mild climate and long growing season allow for two, sometimes three different crops in one year.

COMMUNITY PROFILE

More than 30,000 citizens reside in the Middletown/ Odessa/ Townsend area, known as the M.O.T. area.

QUICK SPECS

LARGEST MUNICIPALITIES

Wilmington	71,146
Newark	30,736
Middletown	26,901
Odessa	352
Townsend	2,953

INCOME (2020 CENSUS)

Median Household:	\$93,750
Per Capita Income:	\$46,790

COST OF LIVING

The cost of living in Delaware has been calculated to be 4% higher than the national average. Housing is 4% higher than the national average, while utilities are 4% lower. However, Delaware residents enjoy a median household income that's eight percent higher than the national average, high wage job opportunities in lucrative industries, a diverse range of affordable housing, and a low tax burden without state-level property taxes and sales tax.

SHOPPING

Delaware offers excellent shopping opportunities—all TAX-FREE! Major shopping malls located within Delaware's larger communities and near major highways throughout Delaware offer selection and convenience for shoppers. Delaware also boasts a wide selection of company outlet stores, discount stores and hundreds of antique shops.

LABOR & EMPLOYMENT

Labor Force (Civilian)	511,100
Unemployment Rate	4.2%

For additional labor market information, visit www.delawareworks.com or labor.delaware.gov/divisions/oolmi/

EDUCATION (AS OF FALL OF 2023)

Source: Delaware Department of Education

Public School Districts:	Enrollment
Appoquinimink	12,466
Brandywine	10,401
Christina	13,397
Colonial	9,531

NEW CASTLE COUNTY

Vo-Tech	4,644
Red Clay	14,837

COLLEGES AND UNIVERSITIES

Delaware College of Art and Design
 Delaware State University
 Delaware Technical and Community College
 Goldey-Beacom College
 Margaret Rollins School of Nursing
 Strayer University
 University of Delaware
 Widener University School of Law (Delaware Campus)
 Wilmington University

STATE OF DELAWARE

Population	1,044,321
Average Household	2.51
Median Household Income	\$80,750

Helping Businesses Increase Revenue.



Managing Revenue & Strengthening Communities

Imagine having a trusted partner whose mission is to increase revenue, cut expenses, and keep you compliant with state and local tax requirements, all without straining your budget - that is Apothic Revenue.





Interested in learning how we can assist in discovering revenue? Call us today!

John Eldridge, Managing Director
Debbie Ament, Executive Director

Phone: (302) 261-3320
Email: apothic.info@apothicrevenue.com
www.apothicrevenue.com



WELCOME TO THE COMMUNITY GUIDE & BUSINESS DIRECTORY

The Middletown Area Chamber of Commerce is dedicated to promoting business and enhancing the quality of life in the Southern New Castle County area. Chamber members take leading roles in important community and business programs, working to enhance and preserve the special lifestyle that is unique to Middletown, Odessa, and Townsend (MOT) communities. We are actively involved in fostering economic development and community spirit for the MOT and surrounding areas.
maccde.com



MIDDLETOWN AREA CHAMBER OF COMMERCE

Dedicated to promoting business and enhancing the quality of life in Southern New Castle County and the surrounding areas.



The Middletown Business Incubator and Collaborative Workspace (MBI) serves as an enterprise business center that provides resources for businesses and entrepreneurs. By inspiring entrepreneurship through opportunity, the MBI will foster economic growth for the MOT and surrounding areas. It is coordinated through the MACC Foundation, a 501 (c) 3 non-profit organization. For more information: call [302.378.7545](tel:302.378.7545) or visit mbide.com



MBI

Middletown Business Incubator
& Collaborative Workspace

Welcome to the Town of Middletown



We are happy to have you join our community and look forward to seeing you out and about during our events.

*If you are in need of our assistance, please reach out to us.
We are here to help.*

Town Hall (302) 378-2711
Open Mon - Fri 8am - 4pm

Public Works (302) 378-2211
Open Mon - Fri 7am - 3:30pm

Utility Payments (302) 378-2711

Middletown Police (302) 376-9950

19 West Green Street, Middletown, DE 19709

(302) 378-2711 • Middletown.Delaware.gov



**ALL AGES.
ALL ABILITIES.**







Children's Therapy Services
 Services for Seniors
 Caregiver Resources
 Supported Employment Services
 Adult Day Services
 Agency With Choice
 Assistive Technology Resources
 Residential & Recreational Camping
 Personal Attendant Services for Children & Adults
 Day Services for Adults with Intellectual Disabilities

de.easterseals.com • (302) 324-4444
 New Castle • Newark • Smyrna • Dover
 Millford • Georgetown • Salisbury • Chestertown



VisitingAngels
 LIVING ASSISTANCE SERVICES

Now Hiring Compassionate Caregivers

Work-Life Balance • Rewarding Positions • Flexible Scheduling Based Around Caregiver Availability • Weekday, Weekend & Evening Shifts Available • High Demand for Caregivers • Bonus Plans • Competitive Wages • Supportive Work Environment

302.751.3324
 VisitingAngels.com/Dover

Each Visiting Angels agency is independently owned and operated.
 *2023 Visiting Angels is a registered trademark of Living Assistance Services, Inc.
 License #PASA-076 | NPI: 1881264711

LEASING OPPORTUNITIES

WAREHOUSE • FLEX • OFFICE



**DUCK CREEK
 BUSINESS CAMPUS**

SMYRNA, DELAWARE

KRM
 Development Corporation

410-810-1574 • KRM-DEV.COM
 SMYRNA • SEAFORD
 STEVENSVILLE • CHESTERTOWN

The Regional Leader In Quality Business Space

CHESAPEAKE
 UTILITIES

We deliver energy that makes life better for the people and communities we serve.

302.734.6799
 chpk.com

PHONE NUMBERS YOU CAN USE

OTHER EMERGENCY NUMBERS

Walk-In Medical Care for minor injuries and illness	302-449-3100
Delaware Help Line	211
Domestic Violence Hotline	302-762-6110
Suicide Hotline	988 or 800-652-2929
Rape Crisis Contact	800-773-8570
Child Abuse Hotline	800-292-9582
Child Mental Health Services	800-969-4357
Poison Control Center	800-222-1222
Crime Stoppers Or 800 (TIP) 3333	302-739-5927
New Castle County Police non-emergency	302-573-2800
State Police Troop 9 non-emergency	302-378-5749
Middletown Police non emergency	302-376-9950
UTILITIES	
Artesian Water Company	302-453-6900
Chesapeake Utilities	800-427-2883
Tidewater Utilities	877-720-9272

TOWN OFFICES

Middletown Town Office	302-378-2711
Odessa Town Office	302-378-2510
Townsend Town Office	302-378-8082

FIRE COMPANIES

Volunteer Hose Co. of Middletown	302-378-7799
Odessa Fire Co.	302-378-8929
Townsend Fire Co.	302-378-8111
Port Penn Fire Co.	302-834-7483

POST OFFICES

Middletown	302-378-6241
Odessa	302-378-2047
Townsend	302-378-2592

PUBLIC LIBRARIES

Appoquinimink Public	302-378-5588
Corbit-Calloway Memorial	302-378-8838

EMERGENCIES

Ambulance, Fire, or Police dial

911

Dover Federal CREDIT UNION



When you bank with a **WINNER** the **REWARDS** are endless.

★ FAVORITE CREDIT UNION ★

Experience the difference: <https://www.doverfcu.com>



Federally Insured by NCUA
© 2024 Dover Federal Credit Union



You Deserve
Agents Who Will
Do More *Than Just*
Sell Your Home.

Learn why sellers say that working with Candice & Carolyn was the difference between success and stress

Carolyn Stanley
M 302.218.8013
carolyn.stanley@compass.com

Candice Santoro
M 302.584.3279
candice.santoro@compass.com



COMPASS RE

Compass RE
O 302.202.9855
3701 Kennett Pike, Wilmington, DE 19807

Candice Santoro & Carolyn Stanley are a team of real estate licensees affiliated with Compass RE a licensed real estate broker and abides by Equal Housing Opportunity laws.

Save Energy. Save Money.

Efficiency Smart is Middletown's one-stop resource to save energy and money



LARGE BUSINESS SOLUTIONS

Expert technical assistance and financial incentives customized for large businesses

- Consultative and customized approach
- Technical guidance from engineering consultants
- Incentives for lighting, HVAC, compressed air, refrigeration, controls, and more



SMALL BUSINESS SOLUTIONS

Energy efficiency advice and rebates tailored to the needs of small businesses

- Options for businesses who rent or own their facility
- Rebates for a variety of technologies, from lighting to refrigeration
- Increased incentives for businesses that purchase qualifying LEDs locally

Call 877.889.3777 or visit www.energysmart.org/middletown-delaware to get started

Energy efficiency services available in partnership between:



BUSINESS ASSISTANCE

THE FOLLOWING ORGANIZATIONS CAN HELP YOU START OR EXPAND YOUR BUSINESS:

DELAWARE DIVISION OF SMALL BUSINESS

Web site: www.business.delaware.gov

The Division of Small Business is a service-focused agency committed to helping businesses start and grow in Delaware. From navigating the government process, to connecting with resource organization to obtaining capital, the Division of Small Business is your one stop resource.

DELAWARE SMALL BUSINESS DEVELOPMENT CENTER

Web site: www.delawaresbdc.org

The Small Business Development Centers (DSBDC) will answer your questions about managing a small business and provide information about small business issues. The DSBDC provides information, training, and free one-on-one counseling for small business owners and those interested in starting a business. The SBDC can obtain a market feasibility study for your business. It contains data such as a detailed demographic profile of your market area and a great amount of other information.

DELAWARE MANUFACTURING EXTENSION PARTNERSHIP

Web site: www.demep.org

(DEMEP) is a non-profit resource organization offering affordable, confidential technical and business solutions to the small and medium sized manufacturers of Delaware. DEMEP provides sound technical field agents and consultants who specialize in solving problems that are unique to manufacturers.

SERVICE CORE OF RETIRED EXECUTIVES (SCORE)

Web site: www.score.org/Delaware

SCORE provides one-on-one counseling from retired executive volunteers for small business people thinking about starting a small business and for current business owners. The organization also offers low-cost business skills workshops throughout the state.

SMALL BUSINESS ADMINISTRATION (SBA)

Web site: www.sba.gov

The mission of the U.S. Small Business Administration Delaware District Office is to aid, counsel, assist and advocate the interests of the state's small business community, utilizing various financial, investment, procurement, as well as business development programs and resources.

DELAWARE PROSPERITY PARTNERSHIP

Web site: www.deprosperitypartnership.com

Created in 2017, the Delaware Prosperity Partnership works locally, regionally, nationally and internationally as the state's lead resource to attract, retain and grow businesses; build a stronger entrepreneurial and innovation ecosystem; and to support private employers in identifying, recruiting and developing talent in the state of Delaware.

OFFICE OF SUPPLIER DIVERSITY

Web site: business.delaware.gov/osd/

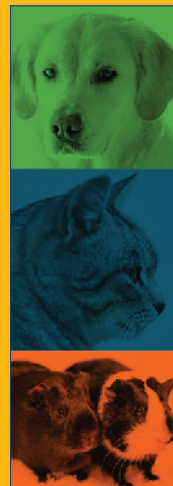
The Office of Supplier Diversity (OSD) mission is to assist the entire supplier diversity community of minority, women, veteran, service disabled veteran, and individuals with disabilities owned businesses as well as small businesses of a unique size in competing for the provision of commodities, services, and construction to State departments, agencies, authorities, school districts, higher education institutions and all businesses.

**WE MAKE LOCAL
ADVERTISING WORK.**

VIAmar![®]
advertising

A locally-owned, results-driven, full-service advertising agency specializing in web design and social media.

Viamarkdelaware.com • 302-660-2136



Companion Animal
VETERINARY ASSOC.

**Providing Individualized Patient Care
In A Fear Free Setting**

Serving The Needs Of Dogs,
Cats & Select Exotics

www.CAVAvet.com
302-464-1255

5360 Summit Bridge Rd., Ste. 2 & 3, Middletown

TAX ADVANTAGES IN DELAWARE

The State of Delaware has adopted a clear, bipartisan policy to attract new business and encourage the expansion of existing operations. Key tax features, which now make Delaware more competitive, include:

- No State or local general sales tax.
- No personal property or inventory taxes.
- Real property taxes are among the lowest in the country.
- Corporate income tax credits and reduction of gross receipts taxes for new and expanded businesses.
- Additional tax credits on corporate income and reduction of gross receipt taxes for new and expanding businesses locating in 30 targeted census tracts.
- Property tax relief for new construction and improvements of existing property.
- The exemption of certain investment and holding companies from corporate income tax.
- The adherence of the State tax structure to the federal definition of corporate net income so that companies may take full advantage of any federal tax law change, such as more rapid depreciation of newly purchased assets.
- Two approved foreign trade zones will allow the deferment of import taxes.
- Public Utility Tax rebates of 50% on increased consumption for qualifying industries, and reduced rate for manufacturers and agricultural processors.
- Accelerated experience ratings for new employers.





A MESSAGE FROM THE PRESIDENT

Dear Chamber Community Members,

I am honored to serve as the President of the Middletown Area Chamber of Commerce. It's truly an exciting time to be a part of the Middletown-Odessa-Townsend business community! As one of the fastest growing areas on the entire East Coast, we see tremendous growth and thrilled to be the business resource for both new and existing MOT businesses. If you haven't seen it yet, our chamber has moved into a wonderful new facility, including a wonderful new incubator space to help startup and newer businesses grow faster and more efficiently. 2024 will be a year of growth and prosperity for MOT and the MACC. With strong leadership, passion, and care for our community, we continue our dedication to promoting business and enhancing the quality of life in the Southern New Castle County area.

The chamber is positioned to provide innovative solutions and value focused resources for our businesses as we continue to grow with you. Our members have access to infinity partnership programs such as 401k, healthcare, merchant processing, notary services, and online training. We have also had wonderful networking events, business marketing opportunities, and other traditional events like our Annual Gala, Spring Expo, Scholarship Golf Outing, Spring and Fall Luncheons – look for even more in 2024 as we work toward enhancing membership value.

Thank you to our Executive Director, our Board of Directors, our office staff, and our ambassadors for the work that they do daily to strategically position the chamber and its members for success.

I encourage your feedback and ideas. Please don't hesitate to reach out to me or any member of our team. I hope to see you at an event soon!

Sincerely,

A handwritten signature in black ink, appearing to read "Neil Stalter".

Neil Stalter
President



MACC BOARD OF DIRECTORS

THE MIDDLETOWN AREA CHAMBER OF COMMERCE IS DEDICATED TO PROVIDING A STRONG VOICE FOR BUSINESSES IN SOUTHERN NEW CASTLE COUNTY



The Middletown Area Chamber of Commerce is dedicated to promoting business and enhancing the quality of life in the Southern New Castle County area. Chamber members take leading roles in important community and business programs, working to enhance and preserve the special lifestyle that is unique to Middletown, Odessa, and Townsend (MOT) communities. We are actively involved in fostering economic development and community spirit for the MOT and surrounding areas.

www.maccde.com 302-378-7545



Chairman
Kiel Drake
Fred Drake Automotive



President
Neil Stalter
Diamond State Financial Group



Vice President
Josh Wilson
Mass Mutual



Treasurer
Sharron Cirillo
SC Associates, Inc.



Secretary
Katie Falkowski
Viamark Advertising



Director
Shanon Epley
Elite Building



Director
Anitra Jones
Encompass Healthcare



Director
Susan Yocum
Dover Federal Credit Union



Director
Mike Trego
Appoquinimink School District



Director
Dave Detrick
Chesapeake Utilities Corporation



Director
Carl Pace
The Dynamic Marketing Insights Group, Inc.



Director
Kristen Krenzer
Town of Middletown



Director
Heather Long
Law Offices of Long & Greenberg



Executive Director
Michelle Hummel



Office Manager
Chrissy O'Grady



Member & Engagement Coordinator
Stephanie Dawkins



Office Assistant
Sandy Gauding



MACC FOUNDATION BOARD OF DIRECTORS



I am excited and proud to serve as President of the MACC Foundation this year. Our goal for the Foundation is to expand participation and maximize our facility to provide resources for businesses and entrepreneurs. The MACC Board recently held our strategic planning meeting for 2024, and we are excited as we explore new opportunities to engage with the membership. With our ever-growing community and new industries moving in, we look forward to new and exciting ways to engage the Middletown community.

The MACC Foundation operates the Middletown Business Incubator (MBI), facilitates education and training seminars through the Middletown Enterprises Career Accelerator (MECA), and hosts events to raise funds for annual scholarships and entrepreneurial grants.

On behalf of the Foundation, the Board and I look forward to serving the community and helping small businesses prosper.

Debbie Ament
MACC Foundation President



Foundation
Chairman
Debbie Ament
Apothic Revenue



Foundation
President
Rich MAzzio
Pike Creek Mortgage



Director
Patrick Carson
M&T Bank



Director
Nick Ryan
All Therapy



Director
Mary Jamieson
Mary Kay



Director
Bill O'Neal
MOT Senior Center



Director
Sital Soni
ELM Strategies



Director
Carolyn Stanley
Stanley Properties



The Middletown Business Incubator (MBI) serves as an enterprise business center that provides resources for businesses and entrepreneurs to grow and be successful.



Middletown Business Incubator
& Collaborative Workspace

MISSION: To inspire entrepreneurship through opportunity

VISION: Supporting business and economic growth through entrepreneurship for the MOT (Middletown, Odessa, Townsend) Area

The MBI is unique for our area as it is anchored through the Middletown Area Chamber of Commerce (MACC) and supported through the Middletown Area Chamber of Commerce Foundation, a 501 (c) 3 nonprofit organization dedicated to scholarship, education and economic development. It also offers a collaborative environment for entrepreneurs and existing businesses with a variety of rental space opportunities, in addition to networking, seminars, workshops and mentorship. More information is available at maccde.com/mbi-workspace



SC *associates*

The art of management meets the science of accounting.



SMALL BUSINESS

WOMEN OWNED

15+ YEARS IN BUSINESS



**SCHEDULE A NEW
CLIENT CONSULTATION!**



SCAN ME



SERVICES:



Advisory Services



Outsourced CFO



CFO Coaching



Year-Round Bookkeeping and Compliance



Tax Preparation



Tax Planning



Payroll Services



Training



Non-Profit



Corporate and Partnership Services



Online Services and Solutions



Quickbooks Services

MEMBERSHIP BENEFITS

ADVERTISING

Our new online community calendar offers members the chance to share their events, job postings, coupons and more!

ANNUAL DIRECTORY

The nationally award-winning MACC Community Guide & Business Directory is published annual in both print and electronic formats. All member companies receive a listing in the directory with their membership. The directory may be found at the Chamber office, town offices, Smyrna rest stop and businesses throughout the MOT area. It is also handed out at trade shows and expo's throughout the State of Delaware.

CERTIFICATE OF ORIGIN

International business certificate authorization is complimentary for MACC members.

COMMITTEE INVOLVEMENT

A variety of committees have been established by the MACC. Your involvement in a Chamber committee affords you an opportunity to have a direct impact on the welfare of both the Chamber and the community through the prudent use of your areas of interest and expertise. You will help fulfill the Chamber mission of leading and advancing economic development. In addition, you will be supporting the civic and social welfare of the MOT area through advocacy and support of our members and the community.

CONSTANT CONTACT

Online Marketing Tool for e-mail, newsletters, and surveys services available to members. A 60-day free trial and then members receive up to 25% discount. Available even if you are already a Constant Contact subscriber.

INTERACTIVE WEBPAGE

Members receive a free online interactive webpage and advertising opportunities including coupons, promotions, list job postings, add your events and social media too!

MEDICAL BENEFITS

The Chamber offers excellent enhanced medical, dental, vision, health & supplemental insurance benefits. Healthcare benefits include the opportunity to compare plans with various insurance programs.

NETWORKING & BUSINESS MIXERS

MACC Chamber members can attend 75+ free networking mixers each year. Network with area business contacts at our popular "Making Connections" Mixers. Mixers are a great way to build relationships in the community. No other Middletown area event regularly brings together so many business and community people in one place at one time.

NOTARY PUBLIC SERVICES

Included with membership for all Chamber members and their staff.

REFERRALS

The Chamber receives hundreds of inquiries monthly from businesses and consumers that are referred exclusively to our members. Our website is a great resource that provides the general public with the opportunity to quickly find our Chamber members with the click of a button.

RETIREMENT PLAN OPTIONS

401(K) and retirement options through affiliate partnership with Diamond State Financial

RIBBON CUTTING SERVICES

Ribbon cutting, red ribbon, press release, and newsletter mention with photo, framed official ribbon cutting certificate including piece of ribbon.

SOCIAL MEDIA

MACC events will be published in all social media vehicles including, Facebook, LinkedIn and Twitter for more advertising exposure for our event hosts and sponsors.

TAX DEDUCTIBLE BUSINESS EXPENSE

Chamber dues and related expenses are a tax-deductible business expense. (Consult your tax preparer)

TRAINING COURSES

Online cost-effective training courses through Coggno. Human Resources, Leadership, Social Media & more!

WEBSITE

Our newly enhanced website offers a free online interactive webpage and advertising opportunities for our members. Offer coupons, list job postings, add your events and social media too! Check it out for the latest news and events!

www.maccde.com





2024 DISTINGUISHED PARTNERS

Platinum



Gold



Dover Federal CREDIT UNION
LOCAL PEOPLE • LOCAL DECISIONS

Silver



LAW OFFICE OF
Long & Greenberg



Bronze

Participating



CANDICE SANTORO
&
CAROLYN STANLEY

COMPASS RE



Foundation Partners

Innovator



Enterpriser



Creator



NETWORKING GROUPS

IN ADDITION TO THE VARIOUS NETWORKING OPPORTUNITIES THROUGHOUT THE YEAR AT VARIOUS CHAMBER MIXERS AND EVENTS, THE MACC IS PROUD TO OFFER ITS MEMBERS THREE NETWORKING GROUPS.



MIDDLETOWN BUSINESS ALLIANCE (MBA)

MISSION: To build our member businesses through mutual referral network marketing. Middletown Business Alliance (MBA) Group currently meets each Tuesday at 8:15 am at the MACC office. Networking is followed by business introductions and a weekly presentation. Each meeting offers an opportunity for exchanges of referrals. Only one business from each industry is accepted into the group, so that each member gets to present to the others in a non-competitive atmosphere.

TOASTMASTERS

MACC Standing Ovation Club meets the 2nd & 4th Mondays of each month for leadership and public speaking personal development!







SERVICES:

- PRESSURE WASHING
- ROOF CLEANING
- HOUSE DETAILING
- HOLIDAY LIGHTS
- TRIMLIGHT PERMANENT LIGHTING














📞 302-864-2121 ✉ carl.zitofsky@brighthomede.com 🌐 www.brighthomede.com



Delaware

Mentors Wanted

Our Mentors are the backbone of our organization. If you're an expert in your area and interested in mentoring, reach out to us at contact.0042@scorevolunteer.org



SCORE is a 501(c)(3) nonprofit that provides **FREE Expert Advice** to business owners like you to start, grow, or successfully exit a business. Find your mentor today at:

[Score.org/Delaware](https://score.org/Delaware)



A HISTORY OF SERVICE SINCE 1861

Learn how over 160 years of experience can mean more for you and your small business!

www.ArtisansBank.com

Member
FDIC
LENDER
NMLS#774924

FOLLOW US!   



WHEN IT COMES TO YOUR SKIN
TRUST THE EXPERTS

CALL TO SCHEDULE
302-633-7550



Premier Dermatology & Cosmetic Surgery

118 Sandhill Drive, Suite 104
Middletown, DE 19709

www.premierdermde.com

DERMATOLOGY FOR YOUR WHOLE FAMILY IS RIGHT AROUND THE CORNER.



Find us on 



Corbit • Calloway
MEMORIAL LIBRARY

Literacy & Discovery



Enrichment & the Arts



Community Events



| corbitcalloway.lib.de.us | 302-378-8838 | 115 High St, Odessa, DE 19730 |

A MESSAGE FROM THE MIDDLETOWN MAYOR

The Mayor and Council of Middletown

19 West Green Street, Middletown, Delaware 19709

Kenneth L. Branner, Jr., *Mayor*
Council Members:

James L. Reynolds, *Vice-Mayor*
Aaron T. Blythe
Andrew Chas
Bruce A. Orr
James D. Royston
Craig Sherman



Morris Deputy, *Town Manager*
(302) 378-9120 • Fax (302) 378-5672

Kristen Krenzer, *Public Relations*
(302) 378-2711, x2223 • Fax (302) 378-9172

Rae Yingling, *Administrative Assistant*
(302) 378-5670 • Fax (302) 378-5672

Hello, and welcome to the Town of Middletown!

I am pleased to report that going into 2024, the Town of Middletown is continuing to thrive, keeping up our reputation as “the” place to live, work and play! In fact, Fortune.com named Middletown #5 in the United States in its “50 Best Places for Families to Live 2023” list.

I believe our strong partnerships with all of those who do business in the Town, including the Middletown Area Chamber of Commerce, surely make us stand out in the crowd.

Our new Target is well underway, so we will be welcoming them to Middletown by mid-2024, along with Hobby Lobby, Sprouts and other soon-to-be-named additions to the complex. We have some new entertainment options opening their doors in 2024. First up to the tee, Birdie’s Links and Drinks! I look forward to seeing everyone have fun there and at all of our downtown venues, too.

And, as has been the case for several years now, I’m sure there will be more surprises to announce very soon.

We are excited to see our vibrant town continuing to grow and change, yet we are happy to have been able to maintain our “small town” charm and welcoming atmosphere.

We consider everyone in our community to be our most valuable asset, and we will do everything we can to make you all feel welcome.

As always, don’t hesitate to contact me or anyone on Town Council if you have questions or concerns.

Sincerely,

A handwritten signature in black ink that reads "Ken".

Kenneth L. Branner, Jr., Mayor



MIDDLETOWN

A Short History

Middletown, Delaware, located about 24 miles south of Wilmington, is an early crossroads town, one of the old Delaware towns not on a navigable waterway. Although Middletown is mid-way between Dover and Wilmington, the town received its name in the early 18th century because it was located halfway between a trade route known as the “Herman’s Cart Road.” This road extended from the Bohemia River (a tributary of the Chesapeake Bay) to the village of Cantwell’s Bridge (now Odessa), situated on the Appoquinimink Creek, which flows into the lower Delaware River. This was the shortest route from the Atlantic Ocean to the Chesapeake Bay before the construction of the Chesapeake and Delaware Canal in 1829.

Of course, Native Americans inhabited the Middletown-Odessa-Townsend area for many centuries before the arrival of Europeans. Called the Lenni-Lenape, they were an important branch of the Algonquin tribe. The Algonquins called them “grandfathers” and newly arrived Europeans called them “Delaware Indians.” Translated into English, the words Lenni-Lenape means “real-men.” Native American hunting and fishing parties made use of a trail which begins at Summit Bridge and runs southwest toward Coldwells

WWI Monument on Cochran Square, erected 1919.



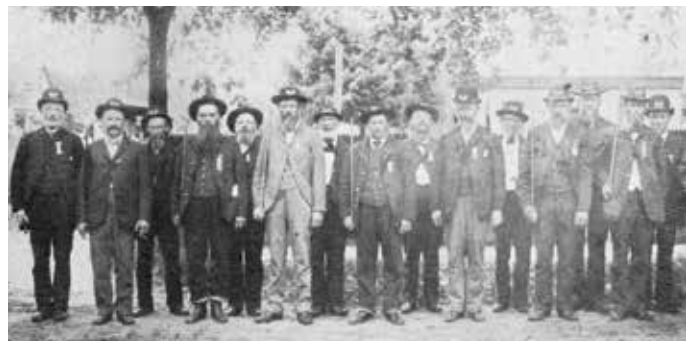
Corner (The Choptank-Bunker Hill Road). As more and more Europeans arrived in the area, it soon made this part of the country uninhabitable for the Lenapes. By the mid-eighteenth century, the Lenapes started an exodus westward which was to end in their virtual extinction as an organized tribe.

On March 4, 1675, a Swede named Adam Peterson took out a warrant to purchase 200 acres of land. Later he amassed 1,024 acres. Middletown is situated on a portion of that land he purchased. His son’s widow married David Witherspoon, a native of Londonderry, Ireland, and they settled upon the King’s Highway at the crossroads, first known as Mrs. Blackston’s Corner. In 1761, David Witherspoon built a “public house” which was to become popular in Middletown as a stop over for travelers along the Upper King’s Road. Scotch-Irish, and Dutch families settled this area and a farming community arose and began to prosper. Portions of the tavern remain within the walls of the present Witherspoon Tavern building, located in the center of town, which was heavily damaged in a Valentine’s Day fire in 1946. The cornerstone is still in the original part of the building. During the Revolutionary War, there were many patriots from the Middletown area who joined the cause for Liberty and Independence. At one time during the campaign, the Delaware Continentals, under the command of Caesar Rodney, encamped at the Noxontown Mill, the exact spot being marked for today’s visitors to that area. Notables of the Revolutionary period such as George Washington and Thomas Jefferson stopped at the Witherspoon for rest and refreshment.

Following the Revolution and the establishment of the original 13 states, Middletown returned to the ways of a farming community. By this time, Middletown had become an important town in the state as a trading center and an agricultural area. The rich soil was abundant in wheat and corn, and trading in the town flourished.

In 1799, Middletown was described as, “A little village of about 120 inhabitants which lies on the arm of the Appoquinimink and here turns several mills. The people are Presbyterians. A stage coach goes three times a week from Philadelphia by way of Wilmington and

Reunion of Civil War troops about 1890





The Witherspoon Inn (1761) now is home to Sully's Irish Pub.

Middletown to Warwick and Chestertown, Maryland returning by the same route; and there is a stage coach from the landing point on Appoquinimink Creek to that on Bohemia Creek.”

Middletown was incorporated on February 12, 1861. The first Council decided the Town should be one mile square, commencing at the center of the crossroads and extending half a mile in each direction. Thus it was known as the “Diamond

Town of the Diamond State.” As the Town has grown, its boundaries have extended in each direction, and schools were erected. The most famous is the Middletown Academy, built in 1826, and used as a private school until 1876. This building today is perhaps the most revered in town. It is now owned by the Middletown Mayor and Council and is currently the home of the Middletown Historical Society and Middletown Main Street.

With the arrival of the railroad in 1855, Middletown entered into a new era of growth. Local farmers found prosperity in the peach industry that flourished in the area between 1850 and 1875. With the completion of the railroad, peaches became the chief crop in the area. The peach industry continued to grow until 1875, the year of the biggest crop. Peaches were shipped from the Middletown area during that season an average of 35 railroad car loads daily, 530 baskets to each car, making a total of 1,500,000 baskets in that year. Unfortunately, the trees were not exempt from disease, and a fatal malady called “peach yellows” infested the crop during the latter quarter of the century and gradually brought about the complete abandonment of peach growing. Large, Italianate “peach mansions” can still be seen north and west of town.

In 1868, Delaware’s oldest consecutively published newspaper, the Middletown Transcript, opened its doors here, as did the Middletown

WWI Memorial on Cochran Square, Delaware's first WWI monument.



Opera House. In 1886, Middletown became one of the first towns in Delaware to install electric street lights. The following year, local firefighters organized the Volunteer Hose Company, and a system of fire hydrants was begun. Water was supplied by a water stack, which still stands on East Lake Street.



Old Academy is now home to the Middletown Historical Society & Middletown Main Street

Middletown has the distinction of being the first town in the State to erect a monument to those who died in World War I, located in the center of town at Cochran square. This bronzed shaft is 18 feet high with an ornamental base, resting on a granite block five feet square, dedicated to the soldiers from this area who lost their lives during World War I. Today it honors all war heroes.

Today, Middletown continues to flourish and prosper, and its boundaries have nearly tripled in size. Now known as one of the fastest growing regions in the state, Middletown offers new and exciting residential communities and an ever-increasing number of employment and shopping opportunities.

The Town Hall and Opera House before the disastrous fire which completely levelled the building in 1918.



ODESSA+TOWNSEND

A Short History

Odessa is known as the town with three names in three centuries. Appoquinimie was the original Indian name of the town. It was changed to Cantwell's Bridge in 1731, named for the man who had the toll bridge over the Appoquinimink Creek. In 1855 the town officials changed the name to Odessa, named for the prominent Ukrainian wheat and produce shipping port, with the hope that Odessa, Delaware would flourish, as did its Russian namesake.

The town's long history dates back to the Dutch and the Swedes in the 17th century. Aside from a few old family names, no trace of these settlers remain. The south side of Main Street was populated first. Then in 1821, the north side of Main Street, which had been farm land, was laid out in lots. The Brick Hotel (c.1822) was the first building constructed. The Log & Frame House (c.1740), The Starr-Lore House (c.1775) and The Enos House (c.1845) are partially of plank and log construction.

Exhaustion of the soil on nearby farms seems to have slowed down commercial activity and building until about 1835 when commercial fertilizers and the laying-out of peach orchards revived the area. Many fine wooden houses in the late Federal style on Main Street and High Street attest to the return of good times. Real wealth came to the community in the 1850's when the Old Methodist church, the Cyrus Polk House, and other handsome residences were built.

Historically, Odessa was one of the important trading ports on the Delaware River until the 1890's when a viral disease, "the yellows," destroyed peach crops, diminishing exports. The railroad, having been placed three miles to the west in Middletown (c.1855), also hastened the decline of the port. Though much smaller than New Castle, Odessa possesses one of the finest collections of late 18th- and early 19th-century architecture in the middle-Atlantic region. The center of town is now on the National Register of Historic Places, and local authorities have zoned the entire town as historic.

The buildings in Odessa cover a period of over two hundred years with fine examples of Colonial, Mid-Georgian, Federal and Victorian architecture. In 1938, Rodney Sharp purchased and started the restoration of the Corbit House, today known as the Corbit-Sharp

In the 1800's, Iron Steamers regularly traveled between Philadelphia and Odessa.



House. It is one of the best-documented houses in America—from the date of its erection to its cost—and even some of the names of the craftsmen and workmen. Today it is owned by Historic Odessa Foundation.

In 1968 Mrs. J.C. Calloway provided a modern brick building on High Street to house the oldest free public library in the state of Delaware. In his will dated 1847, Dr. James Corbit provided for the establishment of the library with a bequest of his library, two railroad bonds, and a Pennsylvania State Bond. Today the library is known as The Corbit-Calloway Memorial Library and is a contractual library with the New Castle County Library System. In 1997 it celebrated 150 years of continual service to the M.O.T area.

Townsend, Delaware, Townsend, known for its broad streets and comfortable homes, is the youngest of the three towns of Middletown-Odessa-Townsend area.

Before the 1850's the site was merely a cluster of cabins known as Charlie Town; named after one of the more important residents of the day.

Samuel Townsend, a man in his thirties, had begun to buy farms in the area in the early 1850's; and one Levi Lattomus had established a store. Mr. Townsend donated land from his adjoining farms in the 1860's for the expanding area. This included a plot for a "little red school house" built in the 1860's. The town was named after Samuel Townsend during this period. It was at this time that the tracks of the Delaware Railroad Co. reached the growing community and a depot was constructed.

Records show that the town was incorporated on April 3, 1885 with a population of 350 and re-incorporated in 1905. Peaches and grain in large quantities were staple exports of Townsend. Around 1886, George M. D. Hart operated a peach dryer, employing 100 people and processing 800 baskets a day during the busy season.

Despite the ending of the peach prosperity after the 1800's, the population continued to grow. In addition to the Delaware Railroad, which passed through the town, the Queen Ann and Kent Railroad ended there, making Townsend a bustling railroad center.

Businesses continued to open and thrive at the end of the nineteenth century and into the twentieth. The town boasted two car dealerships after World War I. Mr. James A. Hart sold Fords and Mr. W. Harmon Reynolds sold Studebaker automobiles. Townsend had a lumberyard operated by the Maloney family and later by the Hart & Beardsley families.

A cannery and a creamery were busy sites in the town. Mr. Shockley was the town watchmaker and Mr. Evan Moffitt was the print shop operator in the 1920's.

Mr. John Guessford ran the barbershop for 75 years beginning in 1912. Mr. S.A. Collins and later Mr. G. Lester Daniels were undertakers.

In the fall of 1925, the worst fire in the history of Townsend began at the J. E. Dickerson hotel located on Main Street and Railroad Avenue. High winds fanned the blaze in the large three-story structure and sent embers onto the wooden roofs on nearby homes. Since there was no fire company in the town, engines were called from nearby communities. They were limited in their use because no water system existed in the town at that time. At the height of the blaze, a large Pennsylvania Railroad Steam Engine approached from the north. The steam engine was immediately commandeered by the residents and firemen for the use of several hundred gallons of water it contained to make steam. The engine made numerous high-speed trips to Middletown to refill its tank. These actions were credited with saving a large portion of Townsend from ruin.

Almost immediately after this fire, plans began to take shape for a fire company and water system in the town. Funds were raised and equipment purchased and by 1927 the systems were up and running. Today, the fire company remains a very important part of the community and a center for activity in the area.

Immanuel United Methodist Church in Townsend was organized in 1871 and consisted of a small frame building near the site of the present church. In 1900, a beautiful brick church was constructed with its impressive stained glass windows and continues to be the architectural focus of the town.



Today is an opportunity to help business succeed.



Contact Jeff Buckworth
302-735-3162
jeffrey.buckworth@pnc.com



©2021 The PNC Financial Services Group, Inc. All rights reserved.
PNC Bank, National Association. Member FDIC
CON PDF 0618-0106

BIG
enough to help,



SMALL
enough to care!



We offer innovative products and services to meet your business banking needs with people who care about you!

Commerical Lending Office • 302-449-6320
102 Sleepy Hollow Drive, Suite 204, Middletown, DE

SHOREUNITEDBANK.COM | 877-758-1600

MEMBER
FDIC



A MESSAGE FROM THE ODESSA MAYOR

Town of Odessa

*315 Main Street
P. O. Box 111
Odessa, DE 19730*

Welcome to Historic Odessa:

The town of Odessa has 360 residents. This small, but historic, town is located near Delaware Route 1 and is a very easy drive from upper New Castle County or the state capital of Dover.

We have eighty historic buildings, some of which are opened to the public, under the direction of the Historic Houses of Odessa.

Along Main Street you will find the police station, town hall, fire station, post office, church, antique shop, and a restaurant, along with many historic properties. The Corbit-Calloway library and two bed and breakfast facilities are located on High Street.

Each year the Historic Houses of Odessa host a brew fest in September, and on the first Saturday in December, the Women's Club sponsors Christmas in Odessa with tours of local homes and public buildings, a craft show, luncheon, and other local activities. Our library has a May Fair on High Street, and breakfast with Santa is held in December at the Odessa Fire Company. These are just a few of the activities in this active town.

Walking on Main Street and High Street, you return to the 18th and 19th centuries with the brick sidewalks and historic buildings, many with white picket fences.

Odessa is a welcoming town to visit or live in. You can go to the town website – odessa.delaware.gov - to find other valuable information.

Sincerely,



Harvey C. Smith, Jr.
Mayor of Odessa



Phone: (302) 378-2510 FAX: (302) 378-8292
Email: townofodessa@gmail.com
Web-Site: odessa.delaware.gov

We are pleased to announce that
Wealth Management Group and
Raymond F Book & Associates, P.A., CPA's
has joined Savant Wealth Management
and **Savant Tax & Consulting.**



TAX ADVISORY | PLANNING | PREPARATION | ACCOUNTING | BUSINESS CONSULTING

Dover: **302-734-5826**
Lewes: **302-644-6850**
Middletown: **302-378-4644**
savantwealth.com

SAVANT 

Savant Wealth Management (“Savant”) is an SEC registered investment adviser headquartered in Rockford, Illinois. Past performance may not be indicative of future results. A copy of our current written disclosure Brochure discussing our advisory services and fees is available upon request or at www.savantwealth.com. The scope of the services to be provided depends upon the needs of the client and the terms of the engagement.

MIDDLETOWN GOVERNMENT

Middletown's government consists of seven elected officials: a mayor and six council members. The mayor and three council members are elected for two-year terms during odd numbered years. The following year, the other three council seats are elected. Elections are held the first Monday in March. To be eligible to vote, you must be at least 18 years old and provide proof of residency in the Town of Middletown. The Mayor and Council meet the first Monday of each month at 7:30 p.m. in the council chambers of Town Hall, 19 W. Green Street.



Mayor
Kenneth L. Branner



Vice Mayor
James Reynolds



Councilman
Drew Chas



Councilman
Aaron Blythe



Councilman
Bruce Orr



Councilman
Craig Sherman



Councilman
James D. Royston

PLANNING AND ZONING COMMISSION

The Planning Commission is appointed by the mayor with the consent of council and consists of 9 town residents. The commission reviews proposed amendments to the town's zoning ordinances and other zoning changes, and makes recommendations to council. Additionally, the commission is charged with reviewing the comprehensive plan, and makes recommendations to council for revisions. Planning Commission meetings are held the third Thursday of the month at 7 p.m. in council chambers of Town Hall, 19 W. Green Street.

BOARD OF ADJUSTMENTS

The Board of Adjustments is appointed by the mayor with the consent of council and consists of five town residents. The board is responsible for granting or denying variances, special exceptions and zoning appeals. Board of Adjustment meetings are held as needed in council chambers of Town Hall, 19 W. Green Street.

BUILDING CODE ENFORCEMENT

The Town of Middletown is responsible for inspecting all new residential and commercial construction and renovations to ensure code compliance. It also inspects existing properties to ensure compliance with the housing code and to maintain healthy, sanitary and safe living conditions.

GENERAL CONTRACTORS
DAVID A.
BRAMBLE
INC
CHESTERTOWN, MD

www.davidabrambleinc.com

<p>Site Contractor</p> <ul style="list-style-type: none"> • Hot Mix Asphalt Paving • Stormdrain, Water, and Sewer • Mass Excavation • Site Grading 	<p>Retail Sales</p> <ul style="list-style-type: none"> • Hot Mix Asphalt • Recycled Materials • Sand, Gravel, and Topsoil • Roll Off Dumpster Service
---	--

<p>Office Locations:</p> <p>Home Office Servicing Upper Shore 705 Morgnac Rd Chestertown, MD 410-778-3023</p> <p>Salisbury Office Servicing Lower Shore 28101 Old Eden Rd Eden, MD 410-742-8484</p>	<p>Hot Mix Plant Locations:</p> <p>Wye Mills Plant Wye Mills, MD 410-758-3677</p> <p>Massey Plant Conveniently located 13 miles south of Middletown, DE Massey, MD 410-928-3870</p>
--	--







PERMITS, TAXES + UTILITIES

RESIDENTIAL BUILDING PERMITS

If you are planning a home improvement project, contact the Middletown Building Permit Office, located at Town Hall, 19 W. Green St., Middletown, or call (302) 378-1171. Building permits are required for:

1. Building or installing decks, patio covers, garages; ventilation, heating or air-conditioning supply or exhaust systems; swimming pools; and tool or storage sheds.
2. Additions, dormers, enclosing an existing porch, converting a garage to a livable area, finishing a basement or basement egress.
3. Replacing roofing, windows or siding.
4. Demolishing any structure or part of a structure affecting a building on your property.
5. A building permit ensures that work is done in compliance with the International Building Code and the Code of the Town of Middletown and ensures that each phase of work is inspected by the town's code official. Contractors hired to perform building or reconstruction work must be licensed with the town.

Contact the office for information about Commercial Permits at (302) 378-1171.

COMPLAINTS DEPARTMENT

The code officials also enforce town ordinances prohibiting substandard housing conditions, high weeds and nuisance conditions. The officials investigate property maintenance complaints.

To register a property maintenance complaint in the Town of Middletown, call (302) 378-1171.

RENTAL INSPECTIONS

Each non-occupant owner of a residence who rents or leases to another person is required to have the property inspected prior to occupancy. This also applies to each tenant exchange at a given property.

Call (302) 378-1171 to register your rental property.

HISTORIC DISTRICT ZONING

Following guidelines established by the National Trust for Historic Preservation, special regulations and guidelines have been created for properties located within the Middletown Historic District, which comprises much of the center of town and adjacent streets. Contact the code enforcement department for details.

BUSINESS LICENSE

No person shall conduct or engage in any trade, business or occupation with the Town of Middletown without first having obtained a business license issued by the Town of Middletown and paid the license fee prescribed. Application for business licenses can be obtained at Town Hall, 19 W. Green St., Middletown. For more information, call (302) 378-3587.

TAXES & UTILITIES

Call the Town Office (378-2711) for details.

ELECTRIC

Middletown - supplied by DEMEC, distributed by the town
Odessa & Townsend - supplied directly by Delmarva Power

WATER

Middletown - supplied by Town of Middletown and Artesian Water Company
Odessa - private wells
Townsend - supplied by Artesian Water

SEWERS

Middletown - provided and maintained by the Town Odessa and Townsend sewer service is provided by New Castle County

GARBAGE

Middletown - contracted with outside firm
Odessa - contracted with outside firm
Townsend - contracted with outside firm

NATURAL GAS

Middletown and Odessa - supplied and distributed by Chesapeake Utilities Corp.

TELEPHONE SERVICE PROVIDERS

Verizon 800-942-5000
Breezeline 855-706-1501

TAXES

STATE OF DELAWARE

Web site: www.state.de.us/revenue
For information call 1-302-744-1085.

Sales - There is no state retail sales tax.

Income - Based on a sliding scale from 2.2% to 6.6% according to wages

Corporate Income - 8.7%
(contact the State Tax Dept. at 1-302-577-8783 for more info.)

NEW CASTLE COUNTY

Web site: www.nccde.org
For information call (302) 395-5555.





Appoquinimink School District

#1 District in the State of Delaware



Appoquinimink School District

THE WORLD IS OUR CAMPUS

ADMINISTRATIVE OFFICES
 313 South Fifth Street, PO 4010
 Odessa, DE 19730-4010
www.apposchooldistrict.com
 (302) 376-4128 p

ALFRED G. WATERS MIDDLE
 1235 Cedar Lane Road
 Middletown, DE 19709
www.agwaters.org
 (302) 449-3490 p

**ADULT CONTINUING
 EDUCATION PROGRAM**
 120 Silver Lake Road
 Middletown, DE 19709
 (302) 378-5037 p

APPOQUINIMINK HIGH
 1080 Bunker Hill Road
 Middletown, DE 19709
www.appohigh.org
 (302) 449-3840 p

**APPOQUINIMINK
 PRESCHOOL CENTER**
 502 South Broad Street
 Middletown, DE 19709
www.appopreschool.org
 (302) 376-4400 p

**BRICK MILL EARLY
 CHILDHOOD CENTER**
 360 Brick Mill Road
 Middletown, DE 19709
www.brickmillecc.org
 (302) 376-4430 p

BRICK MILL ELEMENTARY
 378 Brick Mill Road
 Middletown, DE 19709
www.brickmilledolphins.org
 (302) 378-5288 p

BUNKER HILL ELEMENTARY
 1070 Bunker Hill Road
 Middletown, DE 19709
www.bunkerhillelem.org
 (302) 378-5135 p

**CANTWELL'S BRIDGE
 MIDDLE**
 550 Tony Marchio Drive
 Townsend, DE 19734
www.cantwellsbridge.org
 (302) 842-2585 p

**CEDAR LANE EARLY
 CHILDHOOD CENTER**
 1221 Cedar Lane Road
 Middletown, DE 19709
www.clecc.org
 (302) 449-5873 p

CEDAR LANE ELEMENTARY
 1259 Cedar Lane Road
 Middletown, DE 19709
www.cedarlaneschool.org
 378-5045 p

CRYSTAL RUN ELEMENTARY
 1470 Aviator Way
 Middletown, DE 19709
www.crystalrunelementary.com
 (302) 842-2650 p

EVERETT MEREDITH MIDDLE
 504 South Broad Street
 Middletown, DE 19709
www.meredithmiddle.org
 (302) 378-5001 p

**LOREWOOD GROVE
 ELEMENTARY**
 820 Mapleton Avenue
 Middletown, DE 19709
www.lorewoodgrove.org
 (302) 842-2575 p

LOUIS L. REDDING MIDDLE
 201 New Street
 Middletown, DE 19709
www.reddingms.org
 (302) 378-5030 p

MIDDLETOWN HIGH
 120 Silver Lake Road
 Middletown, DE 19709
www.middletownhs.org
 (302) 376-4141 p

ODESSA HIGH
 570 Tony Marchio Drive
 Townsend, DE 19734
www.odessahs.org
 (302) 842-2625 p

OLD STATE ELEMENTARY
 580 Tony Marchio Drive
 Townsend, DE 19734
www.oldstateelementary.org
 (302) 378-6720 p

OLIVE B. LOSS ELEMENTARY
 200 Brennan Boulevard
 Bear, DE 19701
www.olivebloss.org
 (302) 832-1343 p

SILVER LAKE ELEMENTARY
 200 East Cochran Street
 Middletown, DE 19709
www.sleschool.org
 (302) 378-5023 p

**SPRING MEADOW EARLY
 CHILDHOOD CENTER**
 611 Campus Drive
 Townsend, DE 19734
www.springmeadoweccc.org
 (302) 378-6760 p

**TOWNSEND EARLY
 CHILDHOOD CENTER**
 10 Brook Ramble Lane
 Townsend, DE 19734
www.townsendeccc.org
 (302) 378-9960 p

TOWNSEND ELEMENTARY
 126 Main Street
 Townsend, DE 19734
www.townsendelem.org
 (302) 378-5020 p

WHEN IT COMES TO YOUR CAR OR TRUCK

TRUST THE DUCK!

(302) 378-4877

4195 Dupont Pkwy, Townsend, DE 19734

FredDrakeAuto.com

Monday-Friday: 8am-5pm



CHECK ENGINE
LIGHT DIAGNOSTICS



OIL
CHANGES



BRAKE
REPAIRS



TIRES &
ALIGNMENTS



COLLISION
REPAIR

OIL CHANGE SPECIAL

\$49.95

Includes **FREE** Seasonal Check-Up
*Excludes Diesel. Must Present Coupon. See website for additional disclaimers.

COLLISION REPAIR SPECIAL

FREE COLLISION REPAIR
ESTIMATE

\$100 OFF
COLLISION DEDUCTIBLE

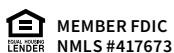
WE SPECIALIZE IN COLLISION REPAIR AND WORK WITH ALL INSURANCE COMPANIES



Where there's
a WSFS, there's
a way.

Middletown Branch

400 East Main Street
Middletown, DE 19709
302.449.5170



WSFS bank

We Stand For Service®

WE ARE YOUR LOCAL

Property Management
Company. Closing the
gap between Ownership
and Operations.

We manage your
building so you can
manage your business.



302-655-2100

www.assetmanagementalliance.com

info@assetmanagementalliance.com

ASSET MANAGEMENT ALLIANCE
Commercial Property Management





EXTRAORDINARY PAINTING THAT TRANSFORMS YOUR LIVING SPACE.

Let the professionals from CertaPro Painters® make it happen for you!

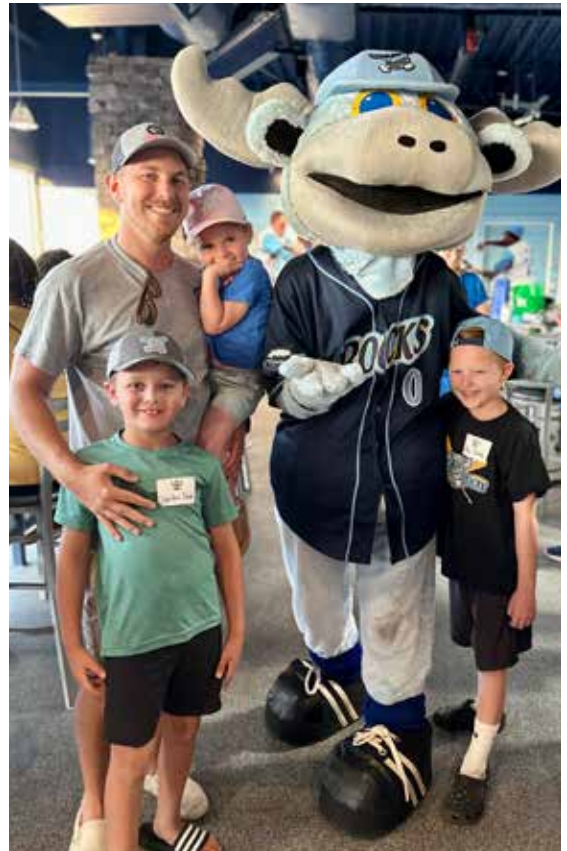
302-510-4719

certapro.com/delaware



We Do Painting. You Do Life.®

Each CertaPro Painters® business is independently owned and operated.



Edward Jones®



Anthony B Johnson
Financial Advisor
222 Carter Dr Suite 104
Middletown, DE 19709
302-376-0283

MKT-5894M-A edwardjones.com

kw
KELLERWILLIAMS



meganaitkenteam

#1 Choice for Real Estate in MOT

We shop local. We use local. We live local.

@MOTRealtor | 302.688.SOLD | 688SOLD.com





MIDDLETOWN/ODESSA/TOWNSEND NUMBERS + SCHEDULES

TOWN OF MIDDLETOWN IMPORTANT NUMBERS

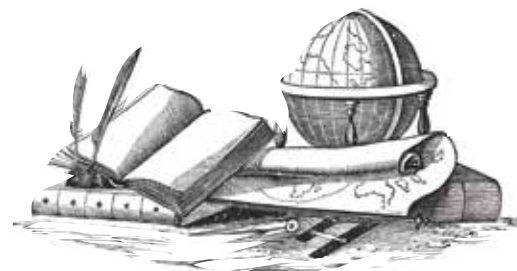
Mayor's Office	302-378-5670
Town Manager's Office	302-378-9120
Business Office/Billing	302-378-2711
Financial Manager	302-378-2711
Public Works	302-378-2211
Emergency (24-hours)	302-378-2211
Electric Foreman	302-378-5143
Water & Sewer Foreman	302-449-2147
Street Foreman	302-378-5140
Code Official & Permits	302-378-1171
Business Licenses	302-378-3587

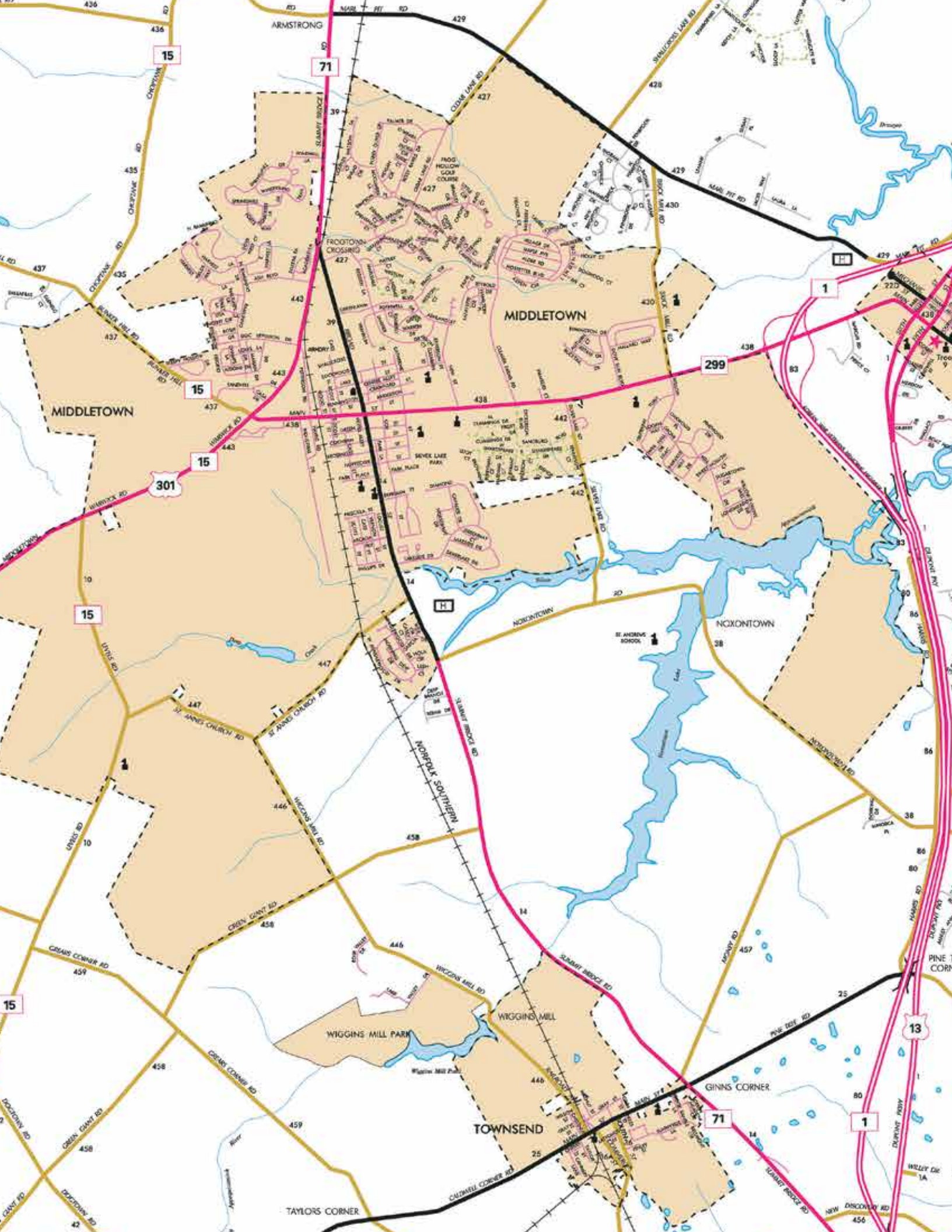
M.O.T. AREA TOWN MEETING SCHEDULES

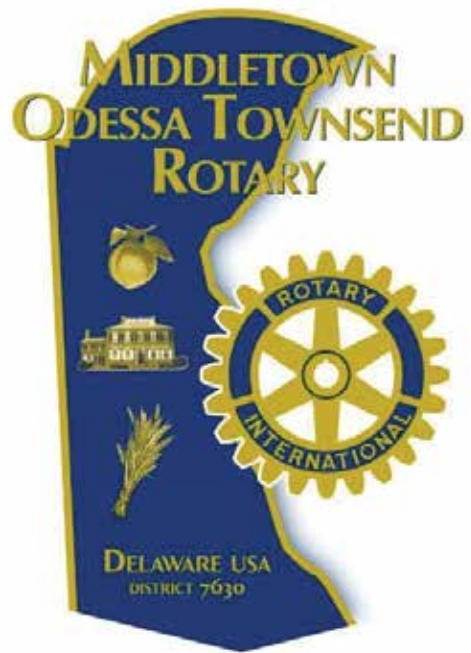
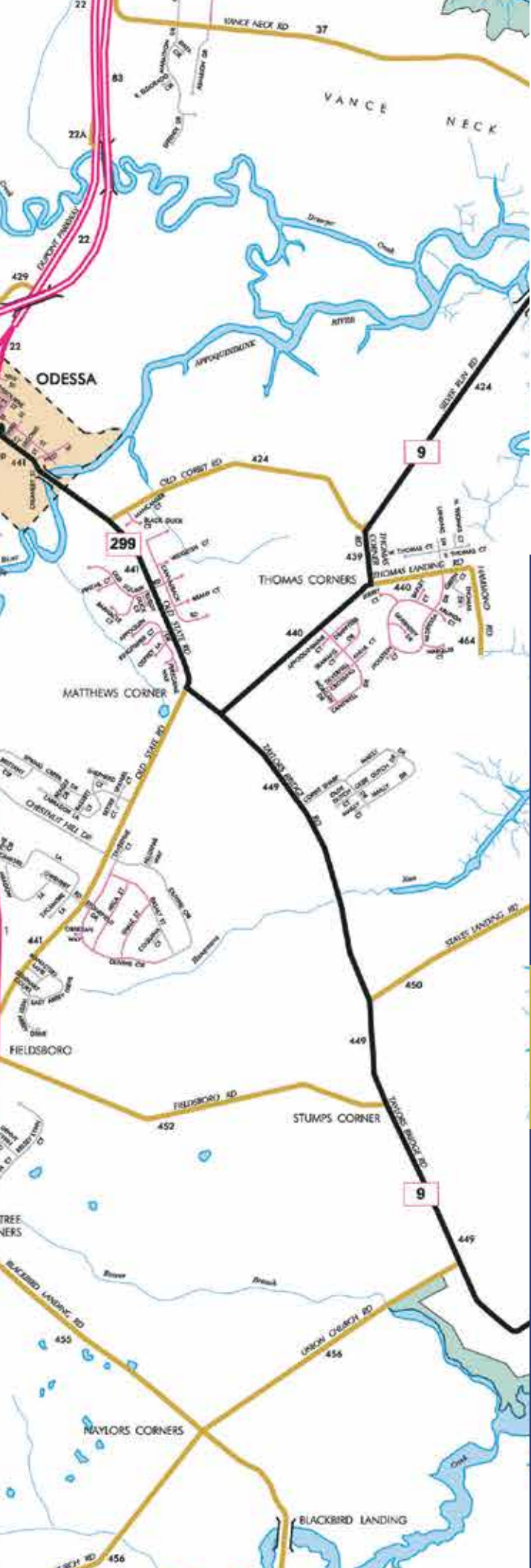
Middletown Council Meetings are the first Monday of every month, beginning at 7:30 p.m., in the Town Hall, located at 19 W. Green Street, Middletown, DE. To make special arrangements for seating, call 378-2711.

Townsend Council Meetings are held on the first Wednesday of each month at 7:30 p.m. in the Town Hall, South Street. Odessa Council meetings are held on the first Monday of each month at 7 p.m. in the Old Academy Building.

School Board meetings are held the second Tuesday of each month at 7 p.m. at the Training Center, 118 South 6th St., Odessa







Interested in a Free Lunch?

As you know, most times, there's no such thing as a "free lunch." But, this time, it's true ...

If you've always wondered about the Rotary Club and what it's all about, come out for a free lunch and check it out!

The Four-Way Test of the things we Think, Say and Do:

1. Is it the Truth?
2. Is it Fair to All Concerned?
3. Will it build Good Will and Better Friendships?
4. Will it be beneficial to all concerned?

The M.O.T. Rotary Club meets each week on Wednesdays at 12:15 p.m., at Buffalo Wild Wings in Middletown.

For more information, contact any of these Rotary members:

Rob Adams	Ceil DeFazio	John Nanni
Celeste Bevans	Katie Falkowski	Bill O'Neal
Irv Brockson	John Goodier	Randy Schurbon
Jeff Buckworth	Michelle Hummel	Vernon Small
Andy Burger	Anthony Johnson	S.R. Smith
Matt Burrows	Kristen N. Krenzer	Rollyn Trueblood
Patrick Carson	Scott Lawrence	Susan Yocum
Sharron Cirillo	Colette Monaghan	Greg Zweiacher

Don't forget our popular annual LIVE AUCTION on the first Wednesday in October, at 6:59pm. Don't miss it!



MIDDLETOWN *Historical Society*

Free Admission

Open
First Friday & Third Saturday of each
month 1pm to 4pm

216 North Broad Street Middletown DE



Search 124 years of the Middletown Transcript
Check our web site for upcoming events

Groups are always welcome at the Middletown Historical Society! Please call Alison Matsen at (302) 740-5544 for more info or visit us online at www.middletowndehistory.com





Sherms Catering



FULL SERVICE CATERER

CHINA • LINENS • SERVERS • DRINK PACKAGES
DE • MD • PA • NJ

We are a preferred vendor at over 30 local venues. We offer full service off premise catering which means we care about the design & flow of your event as much as the food that we serve!

Our Service is better than our Food, and our award winning food is the Best!

Readers Choice, Best Wedding Caterer x 5 years
the Knot, Best of Weddings x 5 years
Wedding Wire, Couples Choice x 3 years



913 Brandywine Blvd. Wilmington, DE 19809
302-607-7200
www.shermscatering.com



ODESSA, TOWNSEND + NEW CASTLE COUNTY

ODESSA TOWN COUNCIL



Mayor
Harvey C. Smith, Jr.



Councilman
John Freeman



Councilwoman
Yeni Ocampo



Councilman
Leonard Aguilar



Councilman
Lionel L. Hynson, Sr.



Treasurer
David E. Sheats, Jr.

Odessa's Government has five council members. The mayor, three council members and the treasurer are elected for two-year terms during odd-numbered years. The following year the other two council seats are filled and the secretary is appointed. Both town clerk and secretary are paid positions. Odessa Town Council meets the first Monday of each month at 7p.m. The meeting location is The Academy at 315 Main Street in Odessa. (302)-378-2510

ODESSA FIRE COMPANY

P.O. Box 81, Odessa, Delaware 19709, 302-378-8929

TOWN OF ODESSA COUNCIL MEMBERS

Mayor	Harvey C. Smith, Jr.
Councilman	John Freeman
Councilwoman	Yeni Ocampo
Councilman	Leonard Aguilar
Councilman	Lionel L. Hynson, Sr.
Treasurer	David E. Sheats, Jr.
Administrative Manager	Barbara A. Roberts
Clerk of the Town	Amy Chillas Taylor

TOWNSEND TOWN COUNCIL

Townsend's government has five elected officials. Terms are two-year, electing three council seats in odd-numbered years and the two remaining seats the following year. Council president is elected from the pool of the five council members, by the members. The Townsend council meets the first Wednesday of each month at the Town Municipal Building in Townsend at 7:30 p.m. (302)-378-8082

TOWNSEND FIRE COMPANY

P.O. Box 1, 107 E. Main Street, Townsend, Delaware 19734
Phone: 302-378-8111 Fax: 302-378-9201

TOWN OF TOWNSEND COUNCIL MEMBERS

Mayor	Patrick Miller
Councilman	Edgar "Ed" Dugan
Councilman	Joshua Mertz
Councilwoman	Eschalla Clark
Councilman	Scott Lobdell

NEW CASTLE COUNTY GOVERNMENT

Web site: www.co.new-castle.de.us. It includes a link for e-mailing County Council members.

CODE ENFORCEMENT

Enforces county laws on zoning, signs, housing, weeds and trash. To file a code-enforcement complaint, contact the county Customer Information and Assistance Office, (302)-395-5555.

COUNTY COUNCIL

Meets 7:30 p.m. second and fourth Tue. (except August) in Council Chambers, first floor, Louis L. Redding City/County Building, 800 French St., Wilmington. Also meets most Tuesday afternoons for council committee meetings. (302)-395-8383.

EMERGENCY SERVICES

Ambulance, Fire, or Police dial	911
Walk-In Medical Care for minor injuries and illness	302-449-3100
Delaware Help Line	211
Domestic Violence Hotline	302-762-6110
Suicide Hotline	800-652-2929
Rape Crisis Contact	800-773-8570
Child Abuse Hotline	800-292-9582
Child Mental Health Services	800-969-4357
Poison Control Center	800-222-1222
Crime Stoppers	302-739-5927

CUSTOMER INFORMATION AND ASSISTANCE OFFICE

(302)-395-5555, 8 a.m.-5 p.m. weekdays as a first stop for questions and code-enforcement complaints.

COMMUNITY SERVICES DEPARTMENT

Manages three senior centers, provides sports and recreation programs. Operates libraries and administers housing programs. (302-)395-5600.

LAND USE DEPARTMENT

Oversees land use and development. Four citizen panels, including the planning board and board of adjustment, also have jurisdiction over land-use and zoning issues. 395-5463. Also issues permits for building, including decks, pools and sheds, and for plumbing, heating, air conditioning, demolition and elevators; conducts building code inspections; registers home warranty companies; licenses home builders, contractors and sewer and drain cleaners; handles property assessment appeals.

Call 302-395-5400 for permits, 302-395-5515 for inspections and 302-395-5520 for assessment appeals.

SPECIAL SERVICES DEPARTMENT

Maintains about 6,184 acres of parkland, and maintains county property and vehicles. Responsible for sewer system.

Call 302-395-5700 for emergency sewer problems. 302-395-5790.

COUNTY SERVICES

MIDDLETOWN HIGH SCHOOL WELLNESS CENTER

The Middletown High School Wellness Center is located at the Middletown High School.

(302)-378-5775

APPOQUINIMINK STATE SERVICE CENTER

122 Silver Lake Road
Middletown, DE 19709

(302)-696-3120

Business Hours: 8:00 a.m. - 4:30 p.m.

Facility Hours: 7:30 a.m. - 5:00 p.m.

Purpose: The Appoquinimink State Service Center currently offers client services administered by Delaware Health and Social Services (DHSS) divisions:

Division of State Service Centers 302-696-3120

Division of Public Health 302-378-5775

Division of Social Service 302-378-5781

Department of Services for 302-378-5778

Probation and Aftercare Children,

Youth & Families Division of

Vocational Rehabilitation 302-378-5779

WALK-IN MEDICAL CARE

CHRISTIANA CARE MEDICAL AID UNIT AT MIDDLETOWN

124 Sleepy Hollow Drive/Suite 100
Middletown, DE 19709

(302)-449-3100

The Christiana Care Medical Aid Unit has filled the need for top-quality, efficient, urgent care. Now, with full-service locations at Christiana (across Rt. 4, from Christiana Hospital), Glasgow (across from Hodgson Vo-Tech), and Middletown (off Bunker Hill Road), the 3 Medical Aid Units are more convenient than ever. Cuts, lacerations,

sprains and fractures, coughs, colds, and sore throats, work-related injuries, eye and ear problems, minor burns, sports injuries and physicals... We're here for you when you need us. Open 7 days a week ~ 8 a.m. to 8 p.m., Holidays ~ 9a.m. to 5 p.m.

HEALTHWORKS

BAYHEALTH'S MIDDLETOWN MEDICAL CENTER

209 E. Main Street

Middletown, DE 19709

(302)-378-1199

The Middletown Medical Center offers diagnostic services including general x-ray, digital mammography, bone density, ultrasound, EKG and lab services. To better serve you, we use the digital PACS (Picture Archiving Communications System) in place of the traditional x-ray processes. With PACS, our board-certified radiologists are able to manipulate images on the computer which improves image abnormality detection and results in better clinical decisions.

Our hours of operation are Monday – Friday from 7:00 am to 5:30 pm, with later evening mammography services by appointment only. Low to no-cost mammography screening is available, if you qualify. Please call us today at 302-378-1199.

PUBLIC WORKS DEPARTMENT

Emergency (24-hours)

(302)-378-2211



A MESSAGE FROM THE TOWNSEND MAYOR



Hello and welcome to the Town of Townsend!

The Town of Townsend is a unique town in Delaware. With the population growing nearly 300% in Town over the last 15 years, we have been able to maintain the small town feel for everyone to enjoy all while overseeing responsible growth.

The town Council and town staff are hard at work throughout the year planning many activities highlighted by our town Fair and Parade festival (June), our back-to-school event (August) and our Christmas caroling and tree lighting ceremony (December).

Throughout the year we plan various interactive activities for our resident families such as our annual Christmas light competition every December.

With cooperation and local presence from our growing Townsend police department and the Townsend Fire Company, there is a significant priority made towards the safety and well-being of our residents. Townsend is located in the Appoquinimink School district which is one of the highest rated districts in the State.

Townsend's unique combination of community identity, spirit and cooperation have helped make it one of the most attractive and desirable residential and maturing business locations in Southern New Castle County. It is close to shopping centers and service needs but far enough away to maintain the small town identity.

We welcome you all to come visit our Town or visit our webpage at townsend.delaware.gov to learn more about us!

Sincerely,
Scott Lobdell, P.E.
Mayor of Townsend



P.O. Box 223 · 141 Main Street · Townsend, DE 19734
Phone (302) 378-8082 · Fax: (302) 378-7099 · www.townsend.delaware.gov ·
townhall@townsend.delaware.gov

ORGANIZATIONS

MIDDLETOWN ACTION NETWORK M.A.N.

(302)-378-1164

The mission of the Middletown Action Network is to provide services in the areas of: Early Anti-Drug Intervention, Policing, Drug Treatment and mental Health Services, Education, Housing and Employment. The Middletown Action Network is a collaboration between Police Agencies, Educational Institutions, Social Service Agencies and The Town of Middletown.

BUSINESS ORGANIZATIONS

Middletown Area 302-378-7545
Chamber Of Commerce

PRIVATE ORGANIZATIONS

Grand Lodge of Delaware Mason 302-652-4614
Moose Lodge 302-359-8900
V.F.W. Post 3792 302-378-9619
American Association
of University Women aauw-de.aauw.net

CIVIC ORGANIZATIONS

Lions Club 302-378-2995
Associated Community Talent, Inc. 302-378-7038

SERVICE ORGANIZATIONS

Alpha-Delta-Kappa-Iota Chapter adkdelaware.com
NCC Drug Unit 302-395-8110
NCC Drug Education 302-395-8050
Women's Club of Odessa 302-378-4900
Alcoholics Anonymous 302-655-5113
Narcotics Anonymous 800-317-3222
M.O.T. Rotary motrotary.org

YOUTH ORGANIZATIONS

Albion Soccer Club 302-231-3006
Boy Scouts 302-622-3300
Boys & Girls Club 302-378-7620
Delaware Union Soccer 302-235-3144
Cub Scouts 302-622-3300
Girl Scouts 302-456-7150
I9 Sports Leagues 302-894-3751
M.O.T. Basketball 302-990-8169
M.O.T. Youth Football 302-668-7131
M.O.T. Little League 302-376-6894
M.O.T. Cheerleading 302-562-3812



Sital Soni, President, SHRM-SCP

HR Executive, Career Coach

302.250.6032 | sital@elmstrategies.net

[sital-soni](https://www.linkedin.com/in/sital-soni)

STRATEGIC PLANNING • CAREER PLANNING

HR DEVELOPMENT • POLICIES & PRACTICES

EMPLOYEE RELATIONS • STAFFING STRATEGY



Discover Hope with Spark Your Soul!

We understand the support needed through your cancer journey. Whether you're the patient or the caregiver, at **Spark Your Soul** we are here to support you every step of the way.

Personalized Care Packages offering emotional and physical support

Let us walk this journey with you.

302.250.6032

inspired@sparkyoursoul.us

TRANSPORTATION BUSES, TRAINS, PLANES

BUSES

For more information on all DART routes, go to www.DartFirstState.com

DART FIRST STATE NEW CASTLE COUNTY

Serving nearly all of New Castle County with more than 36 fixed routes. Primarily weekdays and includes some late-night and some Saturday service. A wheelchair lift-equipped bus may be arranged two days before the desired trip. Reduced fares available for senior citizens and the disabled. (800) 652-DART; 652-DART in New Castle County.

DART FIRST STATE INTERCOUNTY

Weekdays between Wilmington, Dover and Milford, offering connections to routes in New Castle, Kent and Sussex counties and to the Wilmington train station. Express service for commuters between Wilmington and Dover. All buses wheelchair lift-equipped. Fares: \$2.00 to \$10.00, depending on route traveled. Discounted DARTPass \$16 to \$120. (800) 652-DART; (3278); in New Castle County.

DART FIRST STATE PARATRANSIT

Weekdays statewide with limited Saturday service in New Castle County. Transportation for ADA-certified customers. Reservations required at least two business days in advance. (800) 553-DART.

GREYHOUND AND TRAILWAYS

Intercity and interstate routes from Wilmington Transportation Center, Front and French streets.

Greyhound, 655-6111 or www.greyhound.com

Trailways, (800) 858-8555 or www.trailways.com

AMTRAK

Wilmington station, Front and French streets. 4:30 a.m. to 11:59 p.m. Ticket office open from 7 a.m. to 10 p.m. Regional and national service. Frequent runs between Washington and New York make the Wilmington station the seventh busiest passenger rail station and 13th busiest in the country.

(800) 872-7245; www.Amtrak.com

SEPTA

Weekday commuter trains connect the Newark station at South College Avenue with stops at Delaware Park, the Wilmington Amtrak train station at Front and French streets, the Claymont station on Myrtle Avenue, and Philadelphia. There also is limited Saturday service at the Wilmington and Claymont stations. For information about SEPTA trains running from Wilmington to Philadelphia only, call DART First State at (800) 652-3278. Call SEPTA at (215) 580-7800 for information about all its trains, including those that run from Wilmington to Philadelphia.

On the Web: www.septa.org or www.dartfirststate.com

BALTIMORE-WASHINGTON INTERNATIONAL AIRPORT (BWI)

Off Baltimore-Washington Parkway, south of Baltimore. Regular Carriers: Air Canada, Alaska, Allegiant, American, Avelo, Boutique Air, British Airways, Condor, Contour, Copa Airlines, Delta, Frontier, IcelandAir, Jet Blue, Play, Southwest, Spirit, Sun Country Airlines, United, Apple Vacations, Vacation Express. 410-859-7683 or www.bwiairport.com

PHILADELPHIA INTERNATIONAL AIRPORT (PHL)

I-95 and Pa. 291, south of Philadelphia. Regular Carriers: Air Canada, Aer Lingus, Alaska, American, American Eagle, British Airways, Contour, Delta, Frontier, Jet Blue, Luftansa, Qatar Airways, Southwest, Spirit, Sun Country Airlines, United. Information: (215) 937-6937 or www.phl.org. Flights only: (800) PHL-GATE.

NEW CASTLE AIRPORT

Largest air facility in Delaware, with three major runways, ten taxiways and several aircraft parking ramps. Phone: (302) 571-6474 Located just five miles south of Wilmington, Delaware, and only a 35-minute drive from Center City Philadelphia, New Castle Airport is ideally situated for tenants who range from major corporations to individual owners of aircraft. Now offering direct flights to Florida destinations with Avelo Airlines. The airport is just a 10-minute drive from Wilmington Amtrak Station with 90-minute connections to New York City or Washington, DC. I-95, I-295 and the New Jersey Turnpike—the gateways to Washington, DC, New Jersey and New York—are only a five-minute drive from the airport. Their location makes access to the surrounding areas quick and easy.

Phone: 302-571-6474

www.newcastleairportilg.com



MOTOR VEHICLES

Call the state Division of Motor Vehicles in Wilmington at 434-3200, in Dover at 744-2500, in New Castle at 326-5000. Or visit www.delaware.gov then click on the “Resident” button and select “Motor Vehicles.”

NEW RESIDENTS

State law gives new residents up to 60 days to obtain a Delaware driver’s license and register vehicles. Other state licenses must be surrendered. Initial registration requires verification of ownership and safety and emission inspections for cars older than five model years. Out-of-state commercial driver’s licenses must be replaced with the Delaware version within 30 days.

VEHICLE REGISTRATION

Proof of liability insurance and ownership are required. Re-registration can be done by mail if inspection isn’t required. The State charges \$35 for a new title without a lien or \$55 for a title with a lien. A one-time document fee equal to 4.25% of the value of the vehicle (but not less than \$8.00).

INSPECTION, TESTING AND LICENSING

Inspection lanes and licensing facilities are open 8 a.m.-4:30 p.m. Mondays, Tuesdays, Thursdays and Fridays; and noon-8 p.m. Wednesdays. All are closed on major legal holidays. Emissions and safety inspections are required on vehicle models older than 5 years or on vehicles that have previously failed an inspection. Inspections are good for two years.

DELAWARE CITY MOTOR VEHICLES

2101 Mid County Drive, New Castle, DE 19720
(302) 326-5000.

DOVER INSPECTION LANES

303 Transportation Circle, Dover (302) 744-2500
Administrative offices phone number (302) 434-3200

DRIVER’S LICENSES

Required identification documents are a certified birth certificate, immigration document or valid out-of-state driver’s license showing your name and date of birth, a Social Security card and two documents showing your Delaware residential address. All drivers younger than 18 must pass an approved driver’s education course, and a parent or legal guardian must give written consent. A written and road test and eye screening are mandatory for minors and those with foreign licenses. Written and road tests may be waived for adults at the division’s discretion.

GRADUATED DRIVER’S LICENSES

For those under 18, after first obtaining a learner’s permit, which can be obtained at 15 years and 10 months of age. To obtain a learner’s permit, an applicant must have passed a certified Delaware driver education course. For more information, call (302) 739-4885.



AIRESERV™

HEATING & AIR CONDITIONING

a neighborly company

**FEEL THE
AIRE SERV
DIFFERENCE!**



302.330.8409 | YourAireServ.com

A local business that CARES rooted in the community of Middletown.

The Aire Serv team is always here to ensure your comfort, no matter the season! Give our team a call today to schedule your appointment.

\$59 Heating Tune-Up

*Terms and Conditions apply.
Can not be combined with any additional offer. Offer expires 3/1/2024

Ready To Schedule?

SCAN HERE



SCHOOLS, UNIVERSITIES, COLLEGES + HOUSES OF WORSHIP

APPOQUINIMINK SCHOOL DISTRICT

Tony J. Marchio Administrative Offices
313 South Fifth Street, PO 4010
Odessa, DE 19730-4010
www.apposchooldistrict.com

Main Phone	302-376-4128
Superintendent	302-376-4105
Business Office	302-376-4126
Construction	302-376-3839
Curriculum, Instruction & Assessment	302-376-4271
Facilities	302-376-4124
Human Resources	302-376-4275
Nutrition	302-376-4280
Operations	302-376-3492
Safety & Security	302-376-4124
School Choice	302-376-4135
Special Education	302-376-4130
Student Services	302-376-4111
Transportation	302-376-4132

MOT CHARTER SCHOOL

(grades: pre-K-9)
1156 Levels Road, Middletown, DE Office: 302-376-5125

MOT CHARTER HIGH SCHOOL

1275 Cedar Lane Rd, Middletown, DE 19709
Office: (302) 696-2000

PRIVATE SCHOOLS

Middletown's location in central Delaware affords access to many private and parochial schools with a 45-minute radius.

ST. ANDREW'S SCHOOL

(9-12, coed, Episcopal boarding school)
350 Noxontown Road, Middletown, DE 19709
(302) 378-9511 Website: www.standrews-de.org
Co-educational boarding college-preparatory, arts, and religious studies school, affiliated with Episcopal Church. Founded: 1929. Setting: rural. Students are housed in single-sex dormitories. 2,600-acre campus. 10 buildings on campus. Total enrollment: 309. Upper school average class size: 11. Upper school faculty-student ratio: 1:6.

ST. ANNE'S EPISCOPAL SCHOOL

(Pre-K through 8th Grade)
211 Silver Lake Road, Middletown, DE 19709
302-378-3179
Website: www.stannesde.org
Co-ed independent day school that offers differentiated instruction in a small, family oriented and diverse community with a commitment to intellectual, spiritual, physical, social and artistic growth and character development. Total enrollment 297. 7:1 student- teacher ratio.

UNIVERSITY OF DELAWARE, NEWARK CAMPUS

Newark, DE 19716
Office: 302-831-2792
www.udel.edu

DELAWARE STATE UNIVERSITY

1200 North DuPont Hwy., Dover, DE 19901
Day: 302-857-6060 Evening: 302-857-6290
www.desu.com

GOLDEY - BEACOM COLLEGE

4701 Limestone Rd, Wilmington, DE 19808
Office: 302-998-8814
www.gbc.edu

DELAWARE LAW SCHOOL

Delaware Campus
4601 Concord Pike, Wilmington, DE 19803
Office: 302-477-2100
delawarelaw.widener.edu

WILMINGTON UNIVERSITY

320 N Dupont Hwy, New Castle, DE 19720
Office: 877-367-5464
www.wilmu.edu

WASHINGTON COLLEGE

300 Washington Avenue, Chestertown, Maryland 21620
Office: 410-778-2800
www.washcoll.edu

VOCATIONAL – TECHNICAL HIGH SCHOOL

St. George's Technical High School
555 Hyett's Corner Rd, Middletown, DE (302) 449-3360

LOCAL HOUSES OF WORSHIP - MIDDLETOWN

African Methodist Episcopal	302-378-2223
Trinity AME Church	
Real Life Community Church	302-464-1004
938 Middletown Warwick Road	
Connection Community Church	302-378-7692
4744 Summit Bridge Road	
Mt. Calvary Baptist Church	302-378-2777
300 New Street	
Mission Fellowship Church	302-378-5416
Everett Theatre	
St. Anne's Episcopal Church	302-378-2401
15 East Green Street	
Middletown Jehovah's Witnesses	302-378-4889
Noxontown Road	
Love of Christ Church	302-838-0603
316 Warwick Road	
Church on Main	302-464-1191
44 West Main Street	
Grace Orthodox Presbyterian Church	302-545-5038
13 Pennington Street	

SCHOOLS, UNIVERSITIES, COLLEGES + HOUSES OF WORSHIP (CONTINUED)

St. Joseph's Catholic Church 371 East Main Street	302-378-5800
Bethesda United Methodist Church 116 East Main Street	302-378-2313
Dale United Methodist Church 143 East Lake Street	302-696-2525
Ringgold Chapel A.M.E. 5017 Summit Bridge Road	302-378-4681
Middletown Baptist Church 419 Armstrong Corner Road	302-378-2443
Living Grace Worship Cathedral 100 W. Green Street	302-285-9754
Wings of Faith Kingdom Ministries 27 Anderson Street	302-378-1902
Rehoboth Apostolic Church 209 E. Lake Street	302-378-4087
Holy Hill Worship Center 17 W. Cochran Street	302-376-3720
RCCG Amazing Grace Chapel 211 W. Main Street	320-299-8406
Harvest House Church 1191 Boyds Corner Road	302-438-1787
Vision Fellowship Ministries 201 New Street	302-898-0679
Middletown Church of Christ 128 Patriot Drive	302-463-4644
Freedom Church 301 Wood Street	302-283-9278
Evangelical Tree Church 11 Wood St. Middletown, DE	302-376-9110

MT. PLEASANT

New Covenant Presbyterian Church 1125 Jamieson Corner Road	302-378-4446
---	--------------

SUMMIT BRIDGE

Mt. Pisgah UAME 516 Old Summit Bridge Road Middletown, DE	302-378-2764
Summit United Methodist Church 554 Old Summit Bridge Road	302-378-3760

ODESSA

Crossroads Presbyterian Church 627 Vance Neck Road	302-378-6235
St. Paul's United Methodist Church Main Street	302-378-2420
Tree of Life Lutheran Church 505 Osborne St. Odessa, DE	302-378-3345

TOWNSEND

Free Will Baptist Church 4519 S. Dupont Parkway	302-378-1511
Glorious Church of God 145 New Discovery Road	302-376-9464

Immanuel United Methodist 209 Main Street	302-378-8203
Lee's Chapel 423 Blackbird Landing Road	302-378-2106
Lifehouse Church 101 Karins Blvd, Townsend, DE 19734	302-449-0017

RECREATION

SILVER LAKE PARK, MIDDLETOWN

Residents enjoy a variety of recreational activities at the town's Silver Lake Park adjacent to Silver Lake Elementary School on East Cochran Street. The 40-acre park includes tennis and basketball courts, walking trails, a swimming pool, playground, soccer fields, picnic areas and pavilions. The pool is open June through August through management of the Middletown YMCA.

Organized sports at Silver Lake Park include men's and coed softball, girl's softball, coed soccer and boy's football. Sports facilities and organizations are offered by local schools, local sports groups, the YMCA, and the Police Athletic League.

CHARLES E. PRICE MEMORIAL PARK

Directions: From downtown Middletown, take Del. 299 out to U.S. 301. Make left onto 301, pass the Wal-Mart SuperCenter on the right and make the next left onto Del. 15 (Levels Road). The Park is on the right-hand side of the road, just at the curve to the left toward St. Anne's Church Road. Price Memorial Park at Levels Road features miles of walking trails. To walk two (2) miles, start at the entrance of the park on Levels Road and make one full circle around the walking trails.

MIDDLETOWN NATURE AREA

The Middletown Nature Area on South Broad Street features a raised nature trail in a tranquil setting, with woods and a stream, as well as a picnic pavilion.

LITTLE LEAGUE AND SENIOR LEAGUE BASEBALL

Little League and Senior League games are played at Duke Field on Cleaver Farm Road.

RECREATION PHONE NUMBERS

Silver Lake Pool Information	302-828-8191
Middletown YMCA	302-616-9622
Middletown Parks Department	302-378-7459
Playground Information	302-378-5670
Police Athletic League	302-656-9501
Boys & Girls Club	302-378-7620
M.O.T. Basketball	302-990-8169
M.O.T. Youth Football	302-668-7131
M.O.T. Little League	302-376-6894
M.O.T. Cheerleading	302-562-3812
Albion Soccer Club	302-231-3006
Boy Scouts	302-622-3300
Delaware Union Soccer	302-235-3144
Cub Scouts	302-622-3300
Girl Scouts	302-456-7150
I9 Sports Leagues	302-894-3751

ATTRACTIONS + ANNUAL EVENTS

THE EVERETT THEATRE

45 W. Main Street, Middletown. "Middletown's first stage opened in 1863. Originally the building was known as the "Town Hall and Opera House." It flourished as a performing arts, cultural center and community meeting place until falling in a spectacular fire in 1918.

The second structure met the same demise as its predecessor, burning to the ground on April 6, 1922. The name of the newly built building was left to the community who submitted their choices to the Middletown Transcript. The winning name "The Everett" was in honor of the man who ensured the building would rise again and withstand the test of time Mr. John Everett Lewis.

In 1989, the movie "Dead Poets Society" was filmed at both St. Andrew School in Middletown and The Everett Theatre which is featured in the film as Hedley Hall which presents "A Midsummer's Night Dream" and will forever be documented in film history.

The Everett remains the area's cultural center for the cinematic, visual, and performing arts. The Everett's stage is home to live stage productions, children's theater, and one of the finest movie screens on the Delmarva Peninsula.

Phone: 302-378-7038 Email: info@theeverett.org

Website: TheEverett.org

THE MIDDLETOWN HISTORICAL SOCIETY

The Middletown Historical Society was founded in 1985 in an attempt to save a local historic landmark from demolition. The attempt failed but the small core of members remained determined to someday have a home and a museum. The organization remained homeless for some 21 years, meeting here and there, trying to find places to safely store artifacts of their growing collection. The Mayor and Council of Middletown gave the Society the use of the Old Academy, built in 1826 and on the National Register of Historic Places, the perfect location for the Historical Society's home and museum.

Museum exhibits and research room at 216 N. Broad St. are open from 1 to 4 pm on the first Friday and third Saturday of each month. For more information call 302-378-7466 or visit

www.middletowndehistory.com

HISTORIC ODESSA FOUNDATION

An enclave of 18th/19th century buildings located in a historic village, offering guided tours, living history demonstrations, dessert, tea, lunch and dinner in a Cantwell's Tavern. Reservations required. For information call 302-378-4014.

MIDDLETOWN MUSIC AND ARTS

With 2 locations 4380 Summit Bridge Rd., Middletown – Phone 302-376-7600 & 2900 Concord Pike, Ste. E, Wilmington – Phone 302-477-9511. Voted #1 Music Store offering Music Lessons, Summer Camps, Band Rentals, Kindermusic & Repairs.

ANNUAL EVENTS

HISTORIC EVERETT THEATRE

Held each summer is a popular Children's Workshop, designed to expose local children to the performing arts.

SUMMER CONCERT SERIES

In the summertime, a variety of musicians perform at the bandstand at the Middletown-Odesa-Townsend Senior Center, 300 South Scott Street. It's part of the Summer Concert Series.

JULY 4TH CELEBRATION

Middletown's July 4th Celebration of our country's independence features a spectacular fireworks display at Silver Lake Park, off East Cochran Street.

OLDE TYME PEACH FESTIVAL

On the third Saturday in August, Middletown's Olde Tyme Peach Festival brings crowds to Main Street. The festival, which celebrates the town's role as an important 19th Century peach growing region, features a variety of entertainment, food and vendors. Sponsored by the Middletown Historical Society.

CHRISTMAS IN ODESSA

First Saturday in December. Sponsored by Women's Club of Odessa. 302-348-4900

MIDDLETOWN ANNUAL PARADES

For complete information contact Middletown Main St. at 302-378-2977

HUMMER'S PARADE—NEW YEAR'S DAY

A hilarious tradition unique to Middletown, this always quirky parade is known for its political satire and twisted take on current events. (It's actually a spoof of the Mummer's Parade in Philadelphia.)

LITTLE LEAGUE PARADE—MAY

PEACH FESTIVAL PARADE—AUGUST

CHRISTMAS PARADE—DECEMBER

There is also various smaller parades organized by local service organizations throughout the year.

STATE CHAMPIONSHIP CORNHOLE & BREWFEST

October features the Cornhole & Brewfest and is a tribute to the fall season.

WESTOWN MOVIES

12 theaters offering state of the art & 3D GTX movie experience.



STATE PARKS, HISTORICAL ATTRACTIONS, PERFORMING ARTS

STATE PARKS WITHIN 30 MINUTES OF THE M.O.T. AREA

For inland Parks the Daily fee is \$4.00 for Delaware Registered vehicles, \$8.00 for others for Ocean Parks \$5.00 per day for Delaware Registered Vehicles and \$10.00 for out of state vehicles. The fee is charged from March 1 to November 30. There are no fees from December 1 through February 29th or 28th. Daily Pass booklets are available for inland Parks-\$20.00 (6 Passes) for Delaware Registered vehicles and \$20.00 (3 Passes) for out of state vehicles. Ocean Parks are \$25.00 (6 passes) for Delaware Registered vehicles and \$25.00 (3 passes) for out of state vehicles. There is no daily fee for Delaware Firefighter/EMT personnel. The Annual Pass is not valid at the Brandywine Zoo, at Wilmington State Parks and the ferry to Fort Delaware State Park. The annual pass is \$35.00 for Delaware Registered vehicle and active Non-resident Active Military Pass. \$70.00 for Out of State registered vehicle. Delaware Active Military Pass is \$17.50. Senior Pass is \$18.00 for Delaware Registered vehicle and \$35 for Out of State registered vehicle. Operation Iraqi Freedom or Operation Enduring Freedom Veteran Pass FREE. The Web site is www.destateparks.com.

BELLEVUE

Carr Road, off I-95 at Marsh Road, Bellevue; 302-577-3390. 328 acres, tennis, horseback riding, fishing pond, jogging track, disc golf and fitness trail, meeting facility, evening concerts June through August, hayrides in the fall, cultural and environmental activities year-round.

BRANDYWINE CREEK

Adams Dam Road, near Del. routes 100 and 92, Montchanin; 302-577-3534. About 1,000 acres, year-round nature center with programs, disc golf course, picnic facilities, youth camping, fishing, canoeing, nature center, cross-country course and about 12 miles of hiking trails.

FORT DELAWARE

Pea Patch Island in the Delaware River, 38 Clinton St., Delaware City. Experience Civil War history in person. Originally a Union military post that held approximately 32,000 prisoners over the course of the war, Fort Delaware is alive with award-winning living-history interpreters who put a human face on history. Witness firsthand cannon fire, cooking demonstrations, the laundry, officers' quarters and military drills. A ferryboat takes you out to the island, which also encompasses a large wading bird sanctuary of herons, egrets and ibis. Contact the park or visit www.destateparks.com for hours of operation. Park Office Hours 8am-4pm. Open April 30th – September 25th. Ages 2-12 \$7.00 Ages 13 and over \$12.00 Children under 2 FREE. Seniors (over 62) and Military \$11.00. Phone: 302-834-7941.

FORT DUPONT

North end of C&D Canal, DE Rt. 9, Delaware City. 322 acres. Offers a self-guided interpretive trail as well as periodically scheduled walking tours. Other facilities available are tennis courts, a basketball court and a ball field. A popular fishing area, the park provides a beautiful view of the Delaware River. Phone: 302-834-7941.

FOX POINT

On Lighthouse Road just off Edgemoor Road exit of I-495; 302-577-3390. Narrated trail, two large pavilions, restrooms and playgrounds, wildlife viewing and view of Delaware River shipping activity; handicapped-accessible. 170 acres.

LUMS POND

Five miles south of I-95, off Del. 896, near Kirkwood; 302-368-6989. Largest freshwater pond in the state. Fishing, boat rentals, youth and family camping (\$16-\$50 per night for residents. \$19-\$58 per night for non residents), hiking trails, concession stand, picnic areas, playground, disc golf course, hunting-dog training area and sports complex for volleyball, tennis, shuffleboard, horseshoes and baseball, yurt (circular tent) rentals, several hiking trails including a 7.5-mile trail that circles the pond, 10 miles of multipurpose trails for mountain bicycles and horses. 2,100 acres.

WHITE CLAY CREEK

With three noncontiguous areas and accessible at these locations: two miles northwest of Newark on Del. 896; three miles northeast of Newark on Del. 72; or Polly Drummond Hill Road off Kirkwood Highway in Pike Creek; 302-368-6900. Fishing in White Clay Creek, picnic pavilion, extensive system of nature and fitness trails, youth camping, year-round nature center with programs, wildlife preserve and disc golf course. 3,400 acres.

WILMINGTON STATE PARKS

A connected cluster of four urban parks: Brandywine, Rockford, H.Fletcher Brown, Kentmere Parkway and Hobbs Property; 302-577-7020. Oasis within city of Wilmington along Brandywine River with connecting trails. Amenities include Brandywine Zoo (302-571-7788), Abessinio Stadium, picnic areas, ball fields, pavilions, educational programs and community events. The Zoo is open daily February-December from 10am-4pm January open Friday through Sunday 10am-4pm. Admission April 1 – September 30 – Children ages 3 to 17 and Seniors 62 & over- \$7.00, Adults age 18-61 \$9.00 Children under 3 FREE, October 1st to November 30th and March 1 to March 31 – Children ages 3-17 \$5.00, Senior Citizens 62 & Over \$6.00, Adults 18-61 \$7.00, Children under 3 FREE. December 1 to February 28 admission is FREE for all. Membership fees available check website destateparks.com/GoPlay/BrandywineZoo.

ATTRACTIONS WITHIN 30 MINUTES OF M.O.T AREA DELAWARE TOURISM OFFICE

[website -visitdelaware.com](http://website-visitdelaware.com)

HISTORICAL ATTRACTIONS

FORT CHRISTINA PARK

East Seventh St., Wilmington. Site of the landing of the Swedes and Finns in 1638. "The Rocks," a monument sculpted by Carl Milles, marks the spot. Nearby is the Stalcup family log cabin. Phone: 302-652-5629

(CONTINUED)

JOHN DICKINSON PLANTATION

340 Kitts Hummock Road, roughly seven miles south of Dover. Historic brick mansion and modern visitors' center interpret the agricultural life of an early American Quaker patriot who freed his slaves. He also was a popular writer, a governor of the state and contributor to the Constitution. Reconstructed slave quarters. Beautiful walks. Open year-round. Phone: 302-739-3277

KALMAR NYCKEL SHIPYARD

1124 E. Seventh St., Wilmington. Living-history shipyard and museum. Home of Delaware's Tall Ship Ambassador, the Kalmar Nyckel, an authentic re-creation of the historic vessel that brought the first European settlers to the Delaware Valley in 1638. Ship and shipyard available for tours, private charters, weddings and private functions. Phone: 302-429-7447 www.kalnyc.org

NEMOURS MANSION & GARDENS

1600 Rockland Rd., Wilmington. Set among spectacular French formal gardens, this Carrere and Hastings designed Louis XVI-style chateau was built for Alfred I. DuPont, and contains 102 rooms furnished with fine examples of antique furniture, rare rugs, tapestries and outstanding works of art. Reservations recommended for individuals and required for groups. Phone: 302-651-6912 nemoursestate.org

OLD NEW CASTLE

Six miles south of Wilmington on the Delaware River. The first seat of government in the state, this lovely village is a step back in time. Narrow streets lined by picturesque 18th century homes. Beautiful park along the river. Antiques shops and dining in historic buildings. Phone: 302-322-2794

READ HOUSE & GARDENS

42 The Strand, Old New Castle. Built in 1801, this elegant mansion overlooks the Delaware River. Furnished in the Federal and Colonial revival styles, the houses endures as one of the foremost examples of the federal style of architecture. It is surrounded by a 1 1/2 acre formal garden. Phone: 302-322-8411 readhouseandgardens.org

ROCKWOOD MANSION PARK

610 Shipley Rd., Wilmington. Mid-19th-century, Victorian manor house illustrates rural Gothic architecture. Lush, gardenesque landscape complemented by conservatory with period flora. Museum shop with Victorian and tea memorabilia. Phone: 302-761-4340 www.rockwood.org

WILMINGTON & WESTERN RAILROAD

2201 Newport Gap Pike (Rt. 41 North), Wilmington. The steam/diesel powered train tours through the scenic Red Clay Valley. Trains operate rain or shine. Many special events, dinner trains throughout the year. Call for current brochure/timetable. Phone: 302-998-1930 www.wvrr.com

WINTERTHUR MUSEUM & GARDEN

5105 Kennett Pike, Winterthur. Home to Henry Francis du Pont's unsurpassed collection of antiques and Americana, and a glorious 60-acre naturalistic garden. Children of all ages will enjoy Enchanted Woods, a fairy-tale garden of fun and discovery. Winterthur offers a variety of tours, exhibitions and programs for all ages. Phone: 800-448-3883 www.winterthur.org

PERFORMING ARTS

DELAWARE CHILDREN'S THEATER

1014 Delaware Ave., Wilmington. Favorite classics presented in a century-old theater house listed on National Register of Historic Places. Phone: 302-655-1014 www.DEChildrensTheatre.org

DELAWARE SYMPHONY ORCHESTRA

100 West 10th St, Suite 1003 Wilmington. Delaware's premiere professional orchestra, performing October through May. Venues are DuPont Country Club, Wilmington, Copeland Hall at the Grand Opera House, Wilmington, Gold Ballroom at Hotel DuPont, Wilmington and Cape Henlopen High School, Lewes. Ticket prices range from \$30-\$85 depending on venue. website should be. delawaresymphony.org

DELAWARE THEATRE COMPANY

200 Water St., Wilmington. Brandywine Valley's only resident professional theatre. Their six-play season presents classic and contemporary works and brings noted professional actors, directors and designers to the region. Group rates available. Phone: 302-594-1100 Delawatheatre.org

OPERA DELAWARE

4 S. Poplar St., Wilmington. One of the oldest opera companies in the nation, with 58 seasons of fine performances. Since its founding in 1945, the company has presented more than 160 productions of nearly 100 operas, including 16 world premieres. Phone: 302-658-8063 operade.org

THE GRAND

3 venues in Wilmington— Copeland Hall, The Baby Grand, and The Playhouse. Over 100 performances, ranging from full symphony orchestras, dance and opera to stand-up comedians, jazz, world culture, events, and programs for young people. Considered to be among the best for its acoustics and intimacy. Shows presented all year long. Phone: 800-374-7263 thegrandwilmington.org

UNIVERSITY OF DELAWARE PROFESSIONAL THEATRE

110 Orchard Rd, Newark. Three-year, graduate theater conservatory offering public performances from a primarily classic repertory, such as Shakespeare, Shawn, Chekhov and Ibsen. Phone: 302-831-2204 rep.udel.edu

THE MUSIC SCHOOL OF DELAWARE IN WILMINGTON AND MILFORD

4101 Washington St., Wilmington. A premier regional resource for music education and performance, offering instruction and experience to students of all ages and ability levels. Annual concert calendar includes professional artist performances, student recitals, family concerts and cultural heritage celebrations. The school is within Wilmington city limits, near Rockwood Museum. Phone: 302-762-1132 musicschoolofdelaware.org

(CONTINUED)

MUSEUMS

AIR MOBILITY COMMAND MUSEUM

1301 Heritage Road, Dover. Located on the Dover Air Force Base houses a large collection of vintage and veteran Aircraft, plus historical artifacts since the beginning of the air base in 1941. Has over 24 aircraft on display, and features more multi-engine aircraft than the National Air & Space Museum in Washington, DC. Open to the public Wednesday through Sunday 9am-4pm except for Federal Holidays but Veterans Day. No special ID is required. Entrance is on De Route 9 one half mile from the intersection of US 113. Open year-round except federal holidays. Admission is free, but donations are welcome.

Phone: 302-677-5938 www.amcmuseum.org

BIGGS MUSEUM OF AMERICAN ART

406 Federal St., Dover. Experience two centuries of American art. Discover the rich tradition of Delaware Valley antiques made and owned by fascinating people. Special exhibitions are sure to enchant you.

Phone: 302-674-2111 www.biggsmuseum.org

DELAWARE STATE POLICE MUSEUM & EDUCATION CENTER

1425 North DuPont Blvd., Dover, DE. The Museum is open Tuesday through Saturday 10am-4pm except State and Federal Holidays. There is no charge for admission. Guided tours are available by calling 302-739-7700 www.dspmuseum.com

DELAWARE AGRICULTURAL MUSEUM & VILLAGE

866 N. Dupont Hwy, Dover. The museum houses a variety of antique tractors and farm equipment, the first commercial broiler chicken house in Delaware, a crop duster, log cabin, and changing art exhibits. A special "Please Touch" exhibit is a favorite with young children, where they can pretend to milk a cow, drive a buggy, try on farm clothes, and enjoy other fun activities. Hours of Operation Wednesday- Saturday 10am-3pm Admission Adults 18 and over \$8.00, Seniors and Military \$6.00, Youth age 6-17 \$5.00, and Children 5 and under FREE.

Phone: 302-734-1618 www.agriculturalmuseum.org

DELAWARE ART MUSEUM

2301 Kentmere Parkway Wilmington, Delaware 19806. Distinguished collections of American painting, illustration and English Pre-Raphaelite art are showcased in handsome galleries along with important changing exhibitions from the world's leading art museums. One of Delaware's cultural gems, the museum offers dynamic public programs, a children's participatory gallery, a unique museum store and an Art Sales & Rental Gallery. Hours of operation Wednesday through Sunday 10am-4pm Open Thursday evenings until 8pm April Through December. Admission Adults \$14.00, Students (with valid I.D.) \$7.00, Youth (ages 7-18) \$6.00, Children age 6 and under FREE.

Phone: 302-571-9590 www.delart.org

DELAWARE HISTORY MUSEUM

504 Market St., Wilmington. In the heart of Wilmington, the history museum presents "Distinctively Delaware." a high-tech, interactive exhibition of Delaware's history from the state's first settlement in the 1600s through its incarnation as a 20th-century corporate

capital. "Grandma's Attic" kids museum offers a hands-on history experience for children.

Phone: 302-656-0637 www.hsd.org

DELAWARE MUSEUM OF NATURE & SCIENCE

4840 Kennett Pike, Wilmington. Explore an African watering hole; look beneath the seas; come face to face with a jaguar; encounter life-sized dinosaurs. Families and naturalists are invited to participate in an adventure of discovery. Through dioramas, exhibits, and special programs, the many facets of our natural world are explored and explained. Hours are Daily 9:30am-4:30pm. Admission General, age 3 and up \$14.50, Toddler age 1-2 \$4.25 Under 12 months FREE all admissions have a 5% discount if paid in cash. Phone: 302-658-9111 www.delmns.org

DELAWARE SPORTS MUSEUM & HALL OF FAME

801 Shipyard Drive., Wilmington. Sports history of Delaware from 1860 to the present comes alive through photos, stories, artifacts and memorabilia. Exhibits tell the story of the accomplishments of the First State's athletes, coaches, officials, administrators, sportswriters and broadcasters.

Delaware's Sports Hall of Fame inductees are honored in the museum's exhibits. Hours Every Saturday from 10am-2pm and 2hours before each Blue Rocks game (closes 30 minutes before Game time) Free Admission.

Phone: 302-425-3263 www.desports.org

THE DELAWARE CONTEMPORARY

200 S. Madison St., Wilmington. An exciting 33,000-square-foot museum boasting 7 galleries, 26 on-site artist studios, gift shop, auditorium, classroom and more. Located on the Wilmington Riverfront. There is always something new, with more than 30 exhibitions annually of locally, regionally and nationally recognized artists. Hours are Thursday through Sunday 12pm-5pm. Free but suggested donation is \$12.00 adults, \$6.00 children.

Phone: 302-656-6466 www.decontemporary.org

HAGLEY MUSEUM

200 Hagley Creek Road, Wilmington. Where the duPont story begins in Delaware's Brandywine Valley. Outdoors, the museum features the original duPont mills, estate, and gardens on the banks of the Brandywine River. Indoors, the dynamic, new "DuPont Science and Discovery" exhibit is full of interactive science fun for everyone. Hours are daily 10am-4pm. Admission prices vary depending on which exhibits are open. Check website for current prices and exhibit days.

Phone: 302-658-2400 www.hagley.org

HISTORIC HOUSES OF ODESSA

Hours: Open March through December, Tuesday through Saturday, 10:00 a.m. – 4:30 p.m. (last tour is at 3:00 p.m.), Sunday, 1:00 p.m. – 4:30 p.m. Group and school tours year round by reservation. Call for special times and prices for December holiday tour. Closed January and February, Easter, July 4th, Thanksgiving Day, December 24 and 25. Admission: Adults \$10.00; Groups, Seniors, Students \$8.00, Children under 6 are free. Member discounts available. General Information: For reservations, events or membership call 302-378-4119 or Fax 302-378-4050 www.historicodessa.org

(CONTINUED)

IRON HILL SCIENCE CENTER

1115 Robert L. Melson Lane Newark, DE 19702. Natural history museum sponsored by Delaware Academy of Science. Collection includes taxidermy, rocks and minerals (fluorescent display), fossils, and archaeological artifacts, most indigenous to Delaware. Surrounded by 19 acres of nature trails. Housed in a former one-room schoolhouse, site was mined for jasper and iron ore. Phone: 302-368-5703 www.ironhillsciencecenter.org

JOHNSON VICTROLA MUSEUM

375 S. New Street, Dover. Features an extensive collection of Victor Talking Machines (early record players) and memorabilia. Company founder and inventor Eldridge Reeves Johnson, a native Delawarean, was a competitor of Thomas Edison. Museum exhibits include a 1920's Victrola dealer's store with a collection of talking machines, cabinet Victrolas, early records, and an original painting of 'Nipper,' the dog that became the trademark for RCA, known as "His Master's Voice." Phone: 302-739-3262 www.history.delaware.gov/johnson-victrola-museum/

ATTRACTIONS & RECREATION

BOMBAY HOOK NATIONAL WILDLIFE REFUGE

2591 Whitehall Neck Road (Del. 9 east of Smyrna); 653-6872. Established in 1937. Nearly 16,000 acres managed for migrating and wintering waterfowl and migrating shorebirds and songbirds. A 12-mile auto-tour route provides easy viewing of birds located in impoundments and in tidal salt marsh areas. Five short walking trails are located along the auto-tour route. Hours – open ½ hour before sunrise – closed ½ hour after sunset. Phone: 302-653-9345 <http://bombayhook.fws.gov>

BOWLING

Pleasant Hill Lanes 302-998-8811
Mid County Lanes 302-530-5069

BRANDYWINE ZOO

1001 N. Park Drive, Wilmington. Delaware's only zoo is conveniently located on the banks of the Brandywine River. Visitors view wild and exotic animals such as majestic Siberian tigers, playful North American river otters, colorful macaws and curious South American tamarin monkeys. Phone: 302 571-7788 <https://brandywinezoo.org/>

CHRISTIANA MALL

715 Christiana Mall Rd., Newark. Experience tax-free shopping at its best! Discover an incredible mix of more than 130 sought-after stores, including Pottery Barn, M.A.C., Williams-Sonoma, Ann Taylor, Banana Republic, J. Crew and more! Plus, Macy's, Crate & Barrel and JC Penney. Phone 302-731-9816 www.christianamall.com

DELAWARE PARK CASINO & RACING

777 Delaware Park Blvd., Wilmington. Thoroughbred horse racing, slot machines and big-winning simulcast racing at one location. Free general admission. Banquet and group packages available. Phone: 302-994-2521 www.delawarepark.com

DOVER AIR FORCE BASE

1301 Heritage Road, Dover AFB. The Dover Air Force Base is one of the best-known attractions in Central Delaware. The base is important to the country's defense, as it represents one-fourth of the nation's strategic airlift capacity. For information about the base, contact the Public Affairs Division, 436th Airlift Wing, Phone: 302-677-3372 www.dover.af.mil/

DOVER DOWNS

U.S. 13, Dover. NASCAR races draw more than 140,000 fans for two weekends in June and September. Live harness racing November through April. Simulcast racing and slots year-round. 302-674-4600 www.doverdowns.com

ICE SKATING ARENAS

Skating Club of Wilmington 302-656-5005
University of Delaware 302-831-2868

ROLLER SKATING

Christiana Skating Center 302-366-0473
christianskatingcenter.com
Dover Skating Center 302-697-3218
<https://doverskate.com/>

UNIVERSITY OF DELAWARE ATHLETICS, NEWARK

Exciting college football, basketball, & lacrosse sports action. Call 302-831-2257 for ticket information and schedules of all athletic events.

UNIVERSITY OF DELAWARE PUBLIC ICE ARENA

Public ice skating and host of Olympic skating events and ice shows. Open year round. Phone: 302-831-2868

WILMINGTON BLUE ROCKS

Frawley Stadium, 801 Shipyard Drive, Wilmington. Class Single-A Advanced affiliate of the Boston Red Sox. The team plays a minimum of 70 baseball games a season at beautiful Frawley Stadium, located just off I-95. Games played April-Sept. Phone: 302-888-2015 www.bluerocks.com





YOUR TRUSTED PARTNERS IN LEGAL EXCELLENCE.



Founding partners, Heather Long and Elissa Greenberg bring a collective **29 YEARS OF EXPERTISE** to Long & Greenberg. They specialize in comprehensive legal representation, committed to aiding those affected by injuries from work accidents and motor vehicle collisions. They can help get you the compensation you deserve.



CONTACT US TODAY



(302) 466-5664



Info@InjuryDE.com



InjuryDE.com



TRANSPORTATION

Happy Hands And Feet Kidz Transportation

A unique, private service offering many types of door-to-door transportation services to **Get Your children Anywhere They Need To Go!**

**Safely Moving Kids
From Place To Place!**
Call us when they need to be there!

302.897.2375

HHAFtransportation.com

Safe | Trusted | Reliable

**TRANSPORTATION FOR SCHOOL
ACTIVITIES • DAYCARE • SPORTS**

Covering the Delaware Area

YOUR CHILD'S SAFETY IS OUR #1 PRIORITY



Licensed | Experienced | Background Clearance | Personalized | On-Call Services



M.O.T.



JEAN BIRCH SENIOR CENTER

A multi-service activity center
for members 50 years of age and older



Helping Area Seniors Over Age 50 Stay Healthy, Active, and in the Community for as Long as Safely Possible.

Programs include but are not limited to:

- Transportation
- Nutrition (Hot lunches)
- Ceramics/crafts
- Memory loss program
- Bible study/hymn singing
- Grocery/emergency assistance program
- Day and multi-day trips/excursions
- Line dancing
- Health and Wellness
- Exercise groups
- Group games
- Educational presentations
- Social service benefit assistance

Open Monday - Thursday 8:30 am to 4:00 pm,
Friday 8:30 am to 3:00 pm

Call 302-378-4758 to request additional information

300 S. Scott Street, Middletown, DE 19709
MOTSeniorCenter.com

A United Way Member Agency!



Follow us on Facebook
MOTSeniorCenter

MACC MEMBER SERVICES DIRECTORY

BLUE LISTINGS DESIGNATE A
MACC PREMIERE MEMBER

ACCOUNTING & TAX PREPARATION

SC ASSOCIATES, INC.

651 North Broad St., Suite 103
Middletown, DE 19709
(302) 454-1100
Sharron Cirillo EA CFE PA ABA
ATP

BELFINT, LYONS & SHUMAN, P.A.

1011 Centre Rd., Ste 310
Wilmington, DE 19805
(302) 225-0600
Stephen Ritchie, CPA

HORTY & HORTY, P.A.

503 Carr Road, Suite 120
Wilmington, DE 19809
(302) 652-4194
Doug Phillips

SAVANT WEALTH MANAGEMENT

272 Carter Drive, Suite 110
Middletown, DE 19709
(302) 378-4644
Ron Vascik, CPA

WATTAY ACCOUNTING

3488 S. DuPont Blvd.
Smyrna, DE 19977
(302) 724-9237
Adam Wattay

AC TAX GROUP, LLC

Town of Whitehall
801 Mapleton Ave.
Middletown, DE 19709
1-844-378-1040
Anthony Colonnello

STEPHANO SLACK LLC

1700 W 14th Street
Wilmington, DE 19806
(302) 777-7400
Richard Skinner

ADVERTISING

VIAMARK ADVERTISING

651 N Broad St., Suite 306
Middletown, DE 19709
(302) 660-2136
Katie Falkowski

HOT GRAPHICS PLUS

14 Spring Arbor Dr.
Middletown, DE 19709
(302) 378-9559
Dom Albi

ADVERTISING HEALTHY DTV NETWORK (AHD TV NETWORK)

P.O. Box 1415
BEAR, DE 19701
(302) 366-7502
Jim Copes

CLEAR CHANNEL OUTDOOR

24 Germay Drive
Wilmington, DE 19804
(302) 658-5520
Paul Bozentka

THE DYNAMIC MARKETING INSIGHTS

Group, Inc. The DMI Group
364 East Main Street, Suite 411
Middletown, DE 19938
(302) 223-9448
Carl Pace

BRAVELY

664 Lewes Landing Road
Middletown, DE 19709
(410) 963-8338
Shane Santiago

LOCAL LIFE MARKETING GROUP

125 Rickey Blvd. #1253
Bear, DE 19701
(877) 514-4052
Robert Greenawalt

ADVERTISING / MAGAZINE

TODAY MEDIA/DELAWARE TODAY/ DELAWARE BUSINESS TIMES

1000 N. West St., Suite 601
Wilmington, DE 19801
(302) 656-1809
Charlie Tomlinson

OUT & ABOUT MAGAZINE

307 A Street
Wilmington, DE 19801
(302) 655-6483
Gerald DuPhily

STAM PROMOTIONAL MARKETING

1108 Country Berry Ct.
Middletown, DE 19709
(302) 378-4332
Wendy Stam

ADVERTISING / PRINTING

HEAD OVER HEELS DESIGNS, LLC

441 Goodwick Drive
Middletown, DE 19709
(302) 897-8703
Chelise Strickland

AIRPORT

SUMMIT AVIATION, INC.

P.O. Box 258
Middletown, DE 19709
(302) 834-5400
Joyce Morales

APARTMENTS

THE RESERVE AT WESTOWN

500 Westown Way
Middletown, DE 19709
(302) 525-4580
Jessica Lazartic

APPLIANCE REPAIR

VENTURA APPLIANCE REPAIR

635 Cannery Lane, Suite D
Townsend, Delaware 19734
(302) 388-6316
Scott Ventura

ARCHITECTURAL FIRM

R G ARCHITECTS, LLC

200 West Main Street
Middletown, DE 19709
(302) 376-8100
Robert Grove

AUTO REPAIR

SCOTTI MUFFLER OF MOT

308 A West Main Street
Middletown, De. 19709
(302) 378-9247
Lyn Limpert

PATRIOT AUTO & TRUCK REPAIR

50 E Main St.
Middletown, DE 19709
(302) 449-1550
Kathy De Angelis

AUTOMOBILE DEALERSHIP

NOEL AUTO SALES LLC

2518 N DuPont Parkway
Middletown, DE 19709
(302) 286-7355
Enoel Moret

AUTOMOTIVE REPAIR, PARTS AND SERVICE

FRED DRAKE AUTOMOTIVE

4195 Dupont Pkwy.
Townsend, DE 19734
(302) 378-4877
Kiel Drake

DIAMOND TOWN TIRE PROS AND AUTO CARE

5221 Summit Bridge Rd.
Middletown, DE 19709
(302) 464-1077
James Barnes

SCOTTI MUFFLER OF MOT

308 A West Main Street
Middletown, De. 19709
(302) 378-9247
Lyn Limpert

PATRIOT AUTO & TRUCK REPAIR

50 E Main St.
Middletown, DE 19709
(302) 449-1550
Kathy De Angelis

GO-GLASS JOY LLC

17701 Dartmouth Dr #3
Lewes, DE 19958
(302) 645-9340
Rebecca Snyder

BANKING

M & T BANK

405 W Main St
Middletown, DE 19709
(302) 449-2780
Michael Pinkston II

PNC BANK

460 West Main St.
Middletown, DE 19709
(302) 378-4442
Michael Herbert

FULTON BANK

468 West Main St.
Middletown, DE 19709
(302) 378-4575
Harry Higgins

WSFS BANK

400 East Main Street
Middletown, DE 19709
(302) 449-5170
Karolyn Nagel

SHORE UNITED BANK

102 Sleepy Hollow Drive, Suite 204
Middletown, DE 19709
(302) 449-6320
Brenda Schmidt

ARTISANS' BANK

2961 Centerville Road
Wilmington, DE 19808
(302) 658-6881
Nicole Monroe-Cole

FCCB

4900 Kirkwood Highway
Wilmington, DE 19808
(302) 250-4028
Christine Menser

TD BANK, NA

804 Kohl Ave
Middletown, DE 19709
(302) 464-3263
Hannah Rhoades

AMERICAN SPIRIT

FEDERAL CREDIT UNION

98 Sandhill Drive
Middletown, DE 19709
(302) 464-4067
Maurice Dawkins

TD BANK

2035 Limestone Road
Wilmington, DE 19808
(215) 588-2499
Shawn Anderson

BANQUET FACILITIES

MIDDLETOWN MEMORIAL HALL

27 West Green St.
Middletown, DE 19709
(302) 737-6933
Theresa Ventresca

THE EXECUTIVE BANQUET AND CONFERENCE CENTER

205 Executive Drive
Newark, DE 19702
(302) 731-1800
Annemarie Harrison

BARBER SHOP**1804 BARBERSHOP LLC**

17 Wood St., Unit 53
Middletown, DE 19709
(302) 566-7495
Sandy Esperance

BEAUTY**MARY JAMIESON - MARY KAY INDEPENDENT SALES DIRECTOR**

401 Ketch Lane
Middletown, DE 19709
(302) 376-1065
Mary Jamieson

PARTY OF SIX MARKETING

303 Norwalk Way
Middletown, DE 19709
(573) 586-8532
Amy Holloway

AVON

1346 Choptank Road
Middletown, DE 19709
(302) 299-0912
Cathy Francisco

1804 BARBERSHOP LLC

17 Wood St., Unit 53
Middletown, DE 19709
(302) 566-7495
Sandy Esperance

MY SALON SUITE

1655 Lake Seymour Dr
Middletown, Delaware 19709
(302) 233-6847
Jim Provo

BROADCASTING**IHEARTMEDIA**

920 West Basin Road, Suite 400
New Castle, Delaware 19720
(856) 840-9119

BUSINESS & PROFESSIONAL SERVICES**HELPING ONE MORE ENTREPRENEUR**

108 Patriot Drive, Suite A
Middletown, DE 19709
(302) 261-3530
Joseph Richichi

ADAMS HEALTH SOLUTIONS

17 Palmer Drive
The Legends
Middletown, Delaware 19709
(302) 222-4459
Rob Adams

IGNITE LEADERSHIP 360

108 Patriot Drive, Suite A
Middletown, DE 19709
302 766 0982
Kiera Smale

APOTHIC REVENUE

651 N. Broad St., Suite 306
Middletown, DE 19709
(302) 261-5519
John Eldridge

IFS BENEFITS, LLC

220 Continental Dr., Suite 209
Newark, DE 19713
302-652-2355 ex. 155
Patrick Fitzgerald

DELAWARE PROSPERITY PARTNERSHIP

1007 N. Orange Street
Suite 731
Wilmington, DE 19801
(302) 477-7497
Kurt Foreman

TEP CONSULTING SOLUTIONS, LLC

468 West Harvest Lane
Middletown, DE 19709
(610) 608-8244
Tracey Pirri

MELISSA SCOTT REALTOR® WITH EXP REALTY

Middletown, Delaware 19709
(302) 373-5930
Melissa Scott

STEPHANO SLACK LLC

1700 W 14th Street
Wilmington, DE 19806
(302) 777-7400
Richard Skinner

OFFICE SERVICE SOLUTIONS, INC.

710 Wilmington Rd, Ste. A
New Castle, DE 19720
(302) 327-8047
Asher Please

DELAWARE HR SOLUTIONS, LLC

533 Janvier Dr.
MILLBRANCH
Middletown, DE 19709
(302) 530-0264
Alaina Williams-Cotto

GRAY BREAKTHROUGHS, LLC

204 W Pembrey Drive
Wilmington, DE 19803
(302) 468-7559
Carrie Gray

ARK SYSTEMS

9176 Red Branch Rd, J-2
Columbia, Maryland 21045
(443) 973-1835
Bryan Stone

KREATIV DIAMOND STATE RECRUITING INC.

Virtual Office
(302) 332-7538
Krystal Moerdyk

DELAWARE DIVISION OF SMALL BUSINESS

820 N. French Street
Wilmington, DE 19801
(302) 943-9508
Michael Chesney

CABLE / HSI & PHONE PROVIDER**ATLANTIC BROADBAND**

330 Drummer Drive
Grasonville, MD 21638-1204
(443) 425-9770
John Dec

COMCAST

110 Springbrooke Blvd.
Aston, PA 19014
(610) 499-2236
Caitlin Ganley

VANTAGE UNIFIED COMMUNICATIONS

6805 Lower York Road
New Hope, PA 18938
(267) 756-1043
Ira Brooks

CAR WASH**WHICH WASH INC DBA DIAMOND CAR WASH**

104 Sandhill Dr.
Middletown, DE 19709
(302) 449-5896
Todd Whichard

NICKSQUISITE AUTO DETAILING LLC

638 Old School House Road
Middletown, DE 19709
(302) 312-0852
Nicholas Stephenson

CATERING**GOLDEN APPLE CATERERS, LLC**

27 West Green St.
Middletown, DE 19709
(302) 737-6933
Theresa Ventresca

SHERM'S CATERING

913 Brandywine Blvd
Wilmington, DE 19809
302-607-7200
Renee Porter

TACO REHO

100 Sandhill Drive
Middletown, DE 19709
(302) 598-8604
Kelly Repka

ROYAL KITCHEN INC

516 South Street, Unit-516
New Castle, DE 19720
(302) 544-6192
Jesse Singh

IMMEDIATO'S CATERING

4485 Summit Bridge Road
Middletown, DE 19709
(302) 378-8326
Tony Immediato

CHAMBER OF COMMERCE**MIDDLETOWN AREA CHAMBER OF COMMERCE**

651 N Broad St., Suite 306
Middletown, Delaware 19709
(302) 378-7545
Michelle Hummel

DELAWARE SMALL BUSINESS CHAMBER

11F Liberty Plaza
Newark, Delaware 19711
(302) 482-2120
Bob Older

DELAWARE STATE CHAMBER OF COMMERCE

1201 North Orange St.
Wilmington, DE 19801
(302) 655-7221
Chuck James

CECIL COUNTY CHAMBER OF COMMERCE

216 E. Pulaski Hwy, Suite 120
Elkton, MD 21921
(410) 392-3833
Megan McRay

CENTRAL DELAWARE CHAMBER OF COMMERCE

435 N. DuPont Hwy.
Dover, DE 19901
(302) 734-7513
Dina Vendetti

NEW CASTLE COUNTY CHAMBER OF COMMERCE

920 Justison St.
Wilmington, DE 19801
(302) 737-4343
Yvonne Deadwyler

CHILD CARE**BEACH BABIES CHILDCARE AT TOWNSEND**

6020 Summit Bridge Road
Townsend, DE 19734
(302) 378-4778
Thomas Toner

HAPPY PLACE CHILDCARE OF MIDDLETOWN

4922 Summit Bridge Rd
Middletown, De 19709
(302) 449-3311
Anna Tawfik

BRIGHT FUTURES, INC.

125 Sleepy Hollow Drive
Middletown, DE 19709
(610) 905-0506
Jessica Cain

DUCKLINGS ELC MIDDLETOWN

621 Mapleton Ave
Middletown, DE 19709
(302) 676-7410
Bryan Bookout

CHIROPRACTIC**MOT FAMILY CHIROPRACTIC**

222 Carter Drive, Suite 103
Middletown, DE 19709
(302) 593-0031
Lawrence Wendel

ZWEIACHER CHIROPRACTIC

100 South Main Street, Suite 218
Smyrna, DE 19977
(302) 653-1188
Greg Zweiacher, DC

**DELAWARE INTEGRATIVE
HEALTHCARE - FORMALLY
MIDDLETOWN CHIROPRACTIC &
REHABILITATION**

421 E. Main St., Suite 6
Middletown, DE 19709
(302) 376-5830
Trevor Ennis

**DELAWARE BACK PAIN &
SPORTS REHABILITATION CENTER**

124 Sleep Hollow Road, 204
Middletown, DE 19709
(302) 832-8894
Sean Bakst

MIDDLETOWN CHIROPRACTIC

12 Pennington St, Ste 200
Middletown, DE 19709
(302) 316-5858
Vincent Adofoli

CAMP CHIROPRACTIC, INC.

272 Carter Dr., Suite 120
Middletown, DE 19709
(302) 378-5110
Trevor Ennis

CLEANING & RESTORATION

SERVPRO OF DOVER/MIDDLETOWN

607 Otis Drive
Dover, DE 19901
(302) 697-9776

ALL RESTORED INC.

116 Sarah Circle, Ste B
Wyoming, Delaware 19934
(302) 697-7810
Dallas Glass

**JAN-PRO FRANCHISE
DEVELOPMENT OF NEW CASTLE**

2417 Lancaster Ave.
Wilmington, Delaware 19805
(302) 324-5240
Khristian Toolan

**PAUL DAVIS RESTORATION
OF NORTHERN DELAWARE**

118 Sleepy Hollow Dr., Suite 1
Middletown, DE 19709
(302) 449-6941
Mike Aruanno

DAMAGE CONTROL SOLUTIONS LLC

2 Bristle Cone Drive
Middletown, DE 19709
(302) 545-6973
Harry Hamalak

BELFOR PROPERTY RESTORATION

229 Lake Dr
Newark, Delaware 19702
(302) 535-4351
Jason Pinder

**DIBIASO'S CLEANING &
RESTORATION SERVICE**

P.O. Box 43
Townsend, DE 19734
(302) 376-7111
Denise DiBiaso

ACM CLEANROOM SERVICES

3250 South Susan Street, Suite A
Santa Ana, CA 92704
1-800-649-4625
Daniel Brandt

CLEANING SERVICE

**HAMPTON ENTERPRISES
OF DELAWARE INC.**

413 Prestwick Place
Townsend, DE 19734
(302) 378-7365
LaMont Hampton

**JAN-PRO FRANCHISE
DEVELOPMENT OF NEW CASTLE**

2417 Lancaster Ave.
Wilmington, Delaware 19805
(302) 324-5240
Khristian Toolan

SNYDER'S JANITORIAL SERVICES

957 Thomas Davis Dr
Clayton, DE 19938
(302) 530-2765
Rose Snyder

DELAWARE TRASH CAN CLEANING

3115 Frazer Rd
Newark, DE 19702
(302) 310-9075
Tyler LeBlanc

ELITE BUILDING SERVICES

2200 Concorde Pike, 9th Floor
Wilmington, DE 19803
(302) 439-4430
Shanon Epley

**QUALITY CARE CLEANING
SERVICES LLC**

33 Browning Cir
Middletown, DE 19709
(302) 444-1509
Brian Carey

COLLEGE OR UNIVERSITY

**UNIVERSITY OF DELAWARE-
CONFERENCE CENTER**

John M. Clayton Hall
100 David Howell Dr.
Newark, DE 19716
(302) 831-2886
Cathy Matthews

**COMPUTER AND
TECHNOLOGY**

ADOBE

345 Park Avenue
San Jose, California 95110-2704
(408) 753-5826
Ellen Sartin

CONCRETE

CIPOLLONI CONCRETE LLC

879 Black Diamond Road
Smyrna, DE 19977
(302) 449-0960
Brande Cipolloni

CONSTRUCTION

BEVANS HOME IMPROVEMENT LLC

114 E Cochran Street
Middletown, DE 19709
(302) 740-7276
Celeste & Anthony Bevans

LUPOLI HOME IMPROVEMENTS

28 Kirkcaldy Lane
Middletown, DE 19709
(302) 416-2948
Al Lupoli

CIPOLLONI CONCRETE LLC

879 Black Diamond Road
Smyrna, DELAWARE 19977
(302) 449-0960
Brande Cipolloni

**KRM CONSTRUCTION
COMPANY LLC**

913 Washington Avenue
Chestertown, MD 21620
(410) 810-1393
John Johannsen

NOWLAND ASSOCIATES, INC.

2009 Ogletown Road
Newark, DE (USA) 19711
(302) 731-1333
Giff Nowland

BENCHMARK BUILDERS

818 First State Blvd.
Wilmington, DE 19804
(302) 995-6945
Irene Pulgini-Blair

JS HOMES

1919 Red Lion Rd
Bear, DE 19701
302-838-8880 x 701
Bob Taylor

MOT ROOFING LLC

12 E. Green St.
Middletown, DE 19709
302-598-9717
Lisa Poore

**MPC-MAYSE PAINTING &
CONTRACTING**

213 Clydia Court
Middletown, DE 19709
(443) 553-6503
Krista Mayse

AMATO ROOFING AND SIDING

571 Walnut Street
Townsend, DE 19734
(302) 419-8557
Anthony Chambers

GO-GLASS JOY LLC

17701 Dartmouth Dr #3
Lewes, DE 19958
(302) 645-9340
Rebecca Snyder

PRO MAINTENANCE SERVICES

732 Bethel Church Rd
Middletown, DE 19709
(302) 373-8099
Jessica Wehde

CREDIT UNION

DOVER FEDERAL CREDIT UNION

330 Dove Run
Middletown, DE 19709
302-678-8000

DEL-ONE FEDERAL CREDIT UNION

270 Beiser Blvd
Dover, DE 19904
(302) 739-4496
Amy Resh

DEXSTA FEDERAL CREDIT UNION

110 Sandhill Drive
Middletown, DE 19709
(302) 285-1003
Lindsey Nagowski

**CUSTOM MACHINE
EMBROIDERY**

SEW THERE EMBROIDERY

188 Green Giant Rd.
Townsend, DE 19734
(302) 545-0127
Becky Cronin

**DELIVERY, TAKE OUT OR
CURBSIDE TO GO**

CANTWELL'S TAVERN

109 Main St.
Odessa, DE 19730
(302) 376-0600
Megan Saona

CROW FARM-VINEYARD & WINERY

12441 Vansants Corner Road
Kennedyville, MD 21645
(302) 304-0551
Judy Crow

**CROOKED HAMMOCK BREWERY -
LAVIDA HOSPITALITY**

316 Auto Park Dr
Middletown, Delaware 19709
(302) 644-7837
Emily Fitzgerald

HAAGEN-DAZS OF MIDDLETOWN

7 W Main Street
Middletown, DE 19709
1-302-223-2889
James Henry

DENTISTRY

DELAWARE SMILE CENTER

201 Carter Drive, Suite A
Middletown, DE 19709
(302) 285-7645
Lindsay Chasanov

COOK FAMILY DENTISTRY, P.A.

12 Pennington St., Ste.300
Middletown, DE 19709
(302) 378-4416
Megan L. Cook DMD

**DENTAL ASSOCIATES
OF DELAWARE**

106 St. Anne's Church Road
Middletown, DE 19709
(302) 378-8600
Ashley Huenke

MIDDLETOWN FAMILY DENTISTRY

122 Sandhill Dr., Suite 101
 Middletown, DE 19709
 (302) 376-9159
 Scott Arrighi

RUTLEDGE DENTAL ASSOCIATES, INC.

410 N. Cass St
 Middletown, DE 19709
 (302) 378-8705
 Jane Rutledge

WESTOWN DENTAL

820 Kohl Ave.
 Middletown, DE 19709
 (302) 314-3110
 Tania Glidden

SMYRNA PEDIATRIC DENTISTRY

51 Huntfield Dr, Suite 100
 Smyrna, DE 19977
 (302) 508-0037
 David Delgado

DENTAL HOUSE

314 E Main St
 Middletown, DE 19709
 (302) 449-6811
 Kye Williams

DENTISTRY IN MIDDLETOWN

232 Dove Run Centre Dr
 Middletown, DE 19709
 (302) 449-6810
 Jake UramDentistry

DESIGN SERVICES**LAUNCH DESIGN COLLECTIVE**

2113 Keysville Frederick County Rd
 Keymar, MD 21757
 (610) 416-8440
 Paul Dolan

EDUCATION**ST. ANNE'S EPISCOPAL SCHOOL**

211 Silver Lake Rd.
 Middletown, DE 19709
 (302) 378-3179
 Danielle Cummins

ST. ANDREW'S SCHOOL OF DELAWARE

350 Noxontown Road
 Attn: Allie Sethman
 Middletown, DE 19709
 (302) 378-9511
 Allie Sethman

UNIVERSITY OF DELAWARE-CONFERENCE CENTER

John M. Clayton Hall
 100 David Howell Dr.
 Newark, DE 19716
 (302) 831-2886
 Cathy Matthews

APPOQUINIMINK SCHOOL DISTRICT

313 South Fifth Street
 Odessa, DE 19730-4010
 (302) 376-4128
 Lynne Reiter-Truby

MATHNASIUM OF MIDDLETOWN

Middletown Commons
 578 West Main Street
 Middletown, DE 19709
 (302) 449-7053
 Amar Tailor

BRANDYWINE CENTER FOR AUTISM

210 Bellefonte Avenue
 Wilmington, DE 19809
 (302) 575-9702
 Valpresious Ham

HANZ ON CPR LLC

1050 Industrial Drive # 110
 Middletown, DE 19709
 (302) 386-8660
 Lorraine Dagley

SOULSTRINGS INC.

1037 West Founds St.
 Townsend, DE 19734
 (302) 353-6232
 Chris Horne

NEW CASTLE COUNTY FIREARMS

TRAINING SERVICES
 1009 Blackbird Landing Road
 Townsend, DE 19734
 (302) 293-2218
 Nicole Hughes

ELDER RESOURCES**FREEDOM CENTER FOR INDEPENDENT LIVING, INC.**

105 Sleepy Hollow Drive, Ste. A
 Middletown, DE 19709
 (302) 376-4399
 Jody Hougentogler

THE DELAWARE ELDER LAW CENTER

3711 Kennett Pike, Suite 110
 Wilmington, DE 19807
 (302) 300-4390
 W. Wade Scott

ELECTRICAL CONTRACTING**NICKLE ELECTRICAL COMPANIES**

125 Ruthar Drive
 Newark, DE 19711
 (302) 453-4000
 Steve Dignan

SHURELINE ELECTRICAL

100 Artisan Drive
 Smyrna, DE 19977
 (302) 389-1114
 Danielle Lester

TRI-M GROUP, LLC

1050 Industrial Road, Suite 240
 Middletown, DE 19709
 (302) 376-0150
 Rob Anderson

ATR ELECTRICAL SERVICES, INC.

14 Manassas Drive
 Middletown, Delaware 19709
 302-378-3708
 Tammy Mellen

WHITE EAGLE ELECTRIC, INC.

709 Guido Dr.
 Middletown, DE 19709
 (302) 378-3366
 Al Rutkowski

ELECTRICAL INTEGRITY LLC

117 J and M Dr.
 New Castle, DE 19720
 (302) 388-3430
 Leta Siros

BRIGHT LIGHT DESIGN CENTER

401 E. Marsh Lane, Suite 2
 Newport, DE 19804
 (302) 992-9688
 Jay Wilson

TRIDENT ELECTRICAL SERVICES LLC

10 Gaynor Ct.
 Bear, DE 19701
 (302) 513-7676
 Anthony Jones

SUMMERFIELD ELECTRICAL SOLUTIONS

1633 clayton Delaney rd
 CLAYTON, DE 19938
 (302) 824-3045
 Eric Summerfield

ELEVATOR REPAIR

KINETIC ELEVATOR
 1317 MacDade Blvd
 Woodlyn, PA 19094
 (833) 546-5438
 Elizabeth Flumer

ENGINEERING**WOODIN & ASSOCIATES, LLC**

111 Patriot Drive, Suite D
 Middletown, DE 19709
 (302) 378-7300
 Denis Hulme

ENTERTAINMENT**CAMP ADVENTURELAND LLC**

112 Patriot Drive, Suite C
 Middletown, DE 19709
 (302) 449-2267
 Brian Moores

WILMINGTON BLUE ROCKS

801 Shipyard Drive
 Wilmington, DE 19801
 (302) 472-5718
 Jason Estes

KONA ICE OF SOUTH NEW CASTLE

We come to you, we are mobile
 Serving Bear, Middletown, Townsend,
 St. Georges, Port Penn and Beyond
 Middletown, DE 19709
 (302) 605-0078
 Andy Chatham

ELLIGAIL CHARTERS

5573 Boundary Ave.
 Rock Hall, MD 21661
 (443) 480-1804
 Chuck Woodfield

SEA HORSE ADVENTURE LLC

140 Bohemia Vista Marina Drive
 Chesapeake City, MD 21915
 (302) 722-5095

BIRDIE'S LINKS AND DRINKS

320 Auto Park Drive
 Middletown, DE 19709
 302-520-GOLF
 Dylan Hannum

PUTTERS PARADISE

130 Commerce Drive
 Middletown, DE 19709
 (302) 449-0320
 Mark Hall

ENVIRONMENTAL CONSULTING**ENVIROSURE, INC.**

100 West Green Street, Suite 100
 Middletown, DE 19709
 (410) 920-2189
 Charles Chan

EXCAVATION / SITE WORK**MORGAN CREEK GENERAL CONTRACTING LLC**

17 North Cox Street
 Middletown, DE 19709
 (302) 275-3128
 Eric Bradley

FARM MACHINERY DEALERSHIP**HOOPER, INC.**

1130 Middletown Warwick Rd.
 Middletown, DE 19709
 (302) 378-9555
 Mark Reichlin

FARMERS MARKET**DUTCH COUNTRY FARMER'S MARKET**

701 N. Broad Street
 Middletown, De 19709
 (302) 285-6871
 Benjamin Cohen

FENCE & ELECTRIC GATE CONTRACTOR**GUARDIAN FENCE COMPANY**

4783 Summit Bridge Rd.
 Middletown, DE 19709
 (302) 449-5006
 Terri Seemans

FINANCIAL SERVICES**EDWARD JONES / ANTHONY JOHNSON, FINANCIAL ADVISOR**

222 Carter Drive, Suite 104
 Middletown, DE 19709
 (302) 376-0283
 Monica Buswell

WATTAY ACCOUNTING

3488 S. DuPont Blvd.
 Smyrna, Delaware 19977
 (302) 724-9237
 Adam Wattay

GOOD LIFE FINANCIAL GROUP

104 Sleepy Hollow Dr.
Suite 203 - 2nd Flr.
Middletown, DE 19709
(302) 613-2964
Eric Janvier

JONWESLEY CONSULTING LLC

407 Waltham Drive
Shannon Cove
Middletown, DE 19709
(516) 902-0082
John Nedd

INSURVEST

421 Wyatt Drive
Townsend, DE 19734
(302) 299-5637
Renee Chaudoin

EFFICIENT FRONTIER GROUP

4353 Summit Bridge Road
Middletown, DE 19709
(302) 378-9103
Evan Ward

TD BANK

2035 Limestone Road
Wilmington, DE 19808
(215) 588-2499
Shawn Anderson

BALLAST FINANCIAL ADVISORS LLC

33 The Circle
Georgetown, DE 19947
(302) 515-1904
Mark May

FIRE SAFETY

ARK SYSTEMS

9176 Red Branch Rd, J-2
Columbia, Maryland 21045
(443) 973-1835
Bryan Stone

FIREPLACE SALES - INSTALLATION - SERVICE & REPAIR

FLAME-TECH

23 Southgate Blvd., Suite 103
New Castle, DE 19720
(302) 996-9250
Bill Buckley

FITNESS CENTER

IGNITE FITNESS KICKBOXING

220 Carnoustie Rd
Dover, DE, DE 19904
(302) 204-5742
Steph Preece

FREE TO BE YOGA & MOVEMENT

103 Patriot Drive, Suite 104
Middletown, DE 19709
(302) 927-1143
Heather Thomas

FLOORING

CHARLES TYRE FLOORING INC.

24 West Green St.
Middletown, DE 19709
(302) 376-0472
Charles Tyre

UNITED FLOORS INC.

368 East Main Street
Middletown, DE 19709
(302) 570-7405
Winston Rodriguez

BOB WAGNER'S FLOORING AMERICA

938 Middletown Warwick Rd.
Middletown, DE 19709
(302) 376-8700
Chris D'Amico

FLORIST

WILDFLOWERS BY ALICIA

701 North Broad St.
Middletown Dutch Farmers Market
Middletown, DE 19709
(302) 593-9884
Alicia Blackwell

EARTHMOMMY FLORALS LLC

410 North Ramunno Drive, Unit 1008
Middletown, DE 19709
(302) 772-9957
Lisa Thornton

FUNERAL HOME

SPICER-MULLIKIN FUNERAL HOMES & CREMATORY

275 East Main Street
Middletown, DE 19709
(302) 328-2213
Matthew Smith

DANIELS & HUTCHISON FUNERAL HOME

212 N. Broad St.
Middletown, DE 19709
(302) 378-3410
Robert C. Hutchison, JR.

GARDEN CENTER

BEST MATERIALS, INC.

5093 Summit Bridge Road
Middletown, Delaware 19709
(302) 378-1231
Myles Bennett

WILLEY FARMS

4092 Dupont Parkway
Townsend, Delaware 19734
3023788441
Donna Cavender

EARTHMOMMY FLORALS LLC

410 North Ramunno Drive
Unit 1008
Middletown, DE 19709
(302) 772-9957
Lisa Thornton

GENERAL CONTRACTING

SIMPLE SOLUTIONS GENERAL CONTRACTING

305 Old State Road
Townsend, DE 19734
(302) 379-5930
Peter Ramos

MIDDLETOWN KITCHEN AND BATH, LLC

111 Patriot Drive, Unit C
Middletown, DE 19709
(302) 464-1236
Mark Gandy

DAVID A. BRAMBLE, INC.

705 Morgnec Road
Chestertown, MD 21620
(410) 778-3023
Megan Owings

GOLF COURSE

ST. ANNE'S CLUB

1100 St. Anne's Blvd.
Middletown, DE 19709
(302) 268-8888
Jon Manis

ODESSA NATIONAL GOLF CLUB

1131 Fieldsboro Rd.
Townsend, DE 19734
(302) 464-1007
Dale Loeslein

GOVERNMENT AGENCY

STATE OF DE, DEPT. OF LABOR, DIVISION OF VOC. REHAB.

122 Silver Lake Rd.
Middletown, DE 19709
(302) 696-3180
Denise Burke

NEIGHBORS FOR MOORE

PO Box 742
Middletown, DE 19709
(302) 256-9313
Sherae'a Moore

U.S. SMALL BUSINESS ADMINISTRATION

1105 Market Street
Lobby Level, Suite 02
Wilmington, DE 19801
(302)573-6294 X221
Ellyn Herbert

STATE SENATOR NICOLE POORE

411 Legislative Ave.
Dover, DE 19901
(302) 373-0080
Alexa Adams

NEW CASTLE COUNTY COUNCIL

800 North French St., 8th Flr.
Wilmington, DE 19801
Karen Barlow

DELAWARE DEPARTMENT OF LABOR

4425 N Market Street
Wilmington, Delaware 19902
(302) 761-8131
William Davis

HEALTH & WELLNESS

PARTY OF SIX MARKETING

303 Norwalk Way
Middletown, DE 19709
(573) 586-8532
Amy Holloway

TKS NUTRITION, LLC

244 Manchester Way
Middletown, DE 19709
(302) 897-2088
Tracey Sinibaldi

MIDDLETOWN FAMILYCARE ASSOC. LLC

114 Sandhill Drive, Suite 101
MIDDLETOWN, DE 19709
(302) 378-4779
Guni Dedhia

DEDICATED TO WOMEN OB-GYN

209 E. Main St.
Middletown, DE 19709
(302) 389-4009
Jeffrey Coldiron

BAYHEALTH MEDICAL CENTER/ MIDDLETOWN MEDICAL CENTER

209 E. Main St.
Middletown, DE 19709
(302) 378-1199
Kathy Seacord

DELAWARE BREAST CANCER COALITION

165 Commerce Way, Suite 2
Dover, DE 19904
(302) 672-6435
Lois Wilkinson

ALL THERAPY PHYSICAL THERAPY & WELLNESS

101 North Broad Street
Middletown, DE 19709
(302) 376-5578
Nicholas Ryan

FIRST STATE FAMILY PRACTICE, INC.

222 Carter Drive, Suite 101
Middletown, DE 19709
(302) 378-5494
John Kehagias, M.D.

CANCER SUPPORT COMMUNITY DELAWARE

4810 Lancaster Pike
Wilmington, DE 19807
(302) 995-2850
Nicole Pickles

MCCORMICK & ASSOCIATES OF MIDDLETOWN

5350 Summit Bridge Road, Suite 103
Middletown, De 19709
302-449-0710
Caren Coffy-McCormick

ALEXANDER BUSINSKY CONSULTING

191 Gloucester Blvd.
Middletown, DE 19709
302.740.1054
Reba Businsky

DELAWARE ORTHODONTIC
122 Sandhill Drive Suite 201
Middletown, DE 19709
(302) 449-1350
Kathleen Pacana

BURKE DERMATOLOGY
212 Carter Dr., Suite A
Middletown, DE 19709
(302) 449-2400
Thomas Burke

**PREMIER DERMATOLOGY
& COSMETIC SURGERY**
118 Sandhill Drive, Suite 104
Middletown, DE 19709
(302) 633-7550
Nicole Drolet

**EASTERSEALS DELAWARE &
MARYLAND'S EASTERN SHORE,
INC.**
61 Corporate Circle
New Castle, Delaware 19720
(302) 221-2053
Kelly Doty

**BRANDYWINE CENTER
FOR AUTISM**
210 Bellefonte Avenue
Wilmington, DE 19809
(302) 575-9702
Valpresious Ham

MINT & NEEDLE
219 W Green Street
Middletown, Delaware 19709
(302) 696-2484
Brandi Gregg

HANZ ON CPR LLC
1050 Industrial Drive # 110
Middletown, DE 19709
(302) 386-8660
Lorraine Dagley

**FIRST STATE HEALTH
& WELLNESS**
103 Patriot Drive, Suite 105
Middletown, DE 19709
(302) 454-1010
Stacy Kelly

WESTOWN DENTAL
820 Kohl Ave.
Middletown, DE 19709
(302) 314-3110
Tania Glidden

IGNITE FITNESS KICKBOXING
220 Carnoustie Rd
Dover, DE, DE 19904
(302) 204-5742
Steph Preece

WESTSIDE FAMILY HEALTHCARE
300 Water St., Suite 200
Wilmington, DE 19801
(302) 656-8292
Sara Dempsey

**PRAYING HANDS MASSAGE
AND BODYWORK**
1050 Industrial Drive, Suite 110
Est of Farmington
Middletown, DE 19709
(302) 650-3183
Patricia Blakey

ATLANTIC APOTHECARY, INC.
103 S. DuPont Blvd., Suite 2
Smyrna, DE 19977
653-9355
BRANDY STREET

SYBIL BULL ENTERPRISE LLC
3 Weiskopf Circle
Middletown, DE 19709
(302) 312-8973
Sybil Bull

**SUNWISE FAMILY DERMATOLOGY
& SURGERY**
Suite: 203, 102 Sleepy Hollow Drive
Middletown, DE 19709
(856) 912-1344
Jim LaRusso

YOUR CBD STORE
5421 Peterson Rd.
Middletown, DE 19709
(302) 570-7331
Stephen Rall

SMYRNA PEDIATRIC DENTISTRY
51 Huntfield Dr, Suite 100
Smyrna, DE 19977
(302) 508-0037
David Delgado

**HIMALAYAN SALT OF THE
EARTH CAVE LLC**
10 W. Main Street
Middletown, Delaware 19709
(302) 272-5410
Charles Ringgold

INNER BEING WELLNESS
(302) 947-5464
Shannon Childs

PURE WELLNESS MIDDLETOWN
708 Ash Blvd
Middletown, DE 19709
(302) 449-0149
Brooke Mazujian

**BUTTERFLY EFFECT STUDIO
FOR TRAINING**
415 E Main St
Middletown, DE 19709-1463
(302) 278-4347
Walter Sellers

DENTISTRY IN MIDDLETOWN
232 Dove Run Centre Dr
Middletown, DE 19709
(302) 449-6810
Jake Uram

**BLAU GROUP LLC
DBA CLUB PILATES**
Westown Middletown
1651 Lake Seymour Drive
Middletown, DE 19709
(845) 664-5661
Jessica Blau

**ZENLIVEN LLC WELLNESS
STUDIO**
111 West Main St, Suite 200
Middletown, DE 19709
(302) 464-8825
Amanda Nauman

CNU FIT
305 S. Ridge Ave.
Middletown, Delaware 19709
(302) 689-3489
Evans Armantrading Jr.

**CREATIVE MEDICAL CONSULTING
LLC**
111 6th Street
S Dupont Highway
Odessa, Delaware 19730
(302) 313-1411
Stephanie Mitchell

HEALTH INSURANCE
FLEETWOOD INSURANCE GROUP
100 Talbot Blvd.
Chestertown, MD 21620
(410) 778-2260
Brett Davis

HOME BUILDER
JS HOMES
1919 Red Lion Rd
Bear, DE 19701
302-838-8880 x 701
Bob Taylor

HOME CARE
VISITING ANGELS DOVER
1050 Industrial Drive, Suite 120
Middletown, DE 19709
(302) 751-3324
Thomas Smith

**GRISWOLD HOME CARE FOR NEW
CASTLE COUNTY**
5145 W. Woodmill Drive, Suite 22
Wilmington, DE 19808
(302) 456-9904
Patrick Gray

HOME IMPROVEMENT
BEVANS HOME IMPROVEMENT LLC
114 E Cochran Street
Middletown, DE 19709
(302) 740-7276
Celeste & Anthony Bevans

**BROBST HOME IMPROVEMENTS
LLC**
5909 Summit Bridge Road
Townsend, DE 19734
302-376-1656
Matthew Brobst

**SUNDANCE KITCHEN, BATHS &
EXTERIORS**
816 Kohl Ave
Middletown, DE 19709
(302) 793-9352
Jason Stanley

BRIGHT HOME DELAWARE
543 Diamond Drive
Middletown, DE 19709
(302) 864-2121
Carl Zitofsky

ABODE ABOVE INTERIORS
762 Angelou Avenue
Middletown, DE 19709
(302) 267-2705
Jazmyn Miller-Gibbs

**CERTAPRO PAINTERS OF
DELAWARE**
405 Old DuPont Rd.
Wilmington, DE 19804
(302) 212-5742
Denise Garvey

SCREEN MASTERS
303 Holly Lane
Middletown, DE 19709
(302) 293-9151
Shawn Tiller

**HUMAN RESOURCES
CONSULTING & CAREER
PLANNING SERVICES**

INSPERITY
1201 N. Market Street
Wilmington, DE 19802
(302) 295-9706
Ryan Holsten

**KREATIV DIAMOND STATE
RECRUITING INC.**
Virtual Office
(302) 332-7538
Krystal Moerdyk

ELM STRATEGIES
202 Drawyers Dr.
Middletown, DE 19709
(302) 250-6032
Sital Soni

HVAC SERVICES

HONEST HEATING & COOLING LLC
P.O Box 271
Saint Georges, DE 19733
(302) 836-9567
Lawrence Bias

ESQUIRE PLUMBING & HEATING CO.
7 Wood Street
Middletown, DE 19709
(302) 378-7001
Virginia Briccotto

CHRISTIANA MECHANICAL, INC.
109 A Sleepy Hollow Dr.
Middletown, DE 19709
(302) 378-7308
Terri Sill

BLUE HEN MECHANICAL
119 Sleepy Hollow Dr.
Middletown, DE 19709
(302) 598-5094
David P. Harwell

WRIGHT DESIGN INC.

4714 N. Dupont Parkway
Townsend, DE 19734
(302) 464-1264
Jerry Wright

ABC HEATING LLC

119 Madrid Street
Townsend, DE 19734
(302) 668-9665
Kim Burghart

AIRE SERV HEATING & AIR

134B Sandy Dr.
Newark, Delaware 19713
(302) 330-8409
Sarah Boyce

BENDLER HEATING AND COOLING LLC

4569 Summit Bridge Rd
Middletown, De 19709
(302) 299-8520
Nicole Bendler

AIR TEMP SOLUTIONS

211 Lake Drive, Unit J
Newark, DE 19702
(302) 750-4168
Hannah Close

IMPORT/EXPORT**EIGHT INTERNATIONAL**

610 Main Street
Odessa, DE 19730
(302) 261-2417
Suki Campano

HERBAL DISCOVERY LLC

1248 Hook Drive
Middletown, DE 19709
(802) 380-5012
Timothy Slate

INDIVIDUAL**WILL KIRKWOOD**

199 Pine Tree Road
Townsend, DE 19734
(302) 378-4878
Will Kirkwood

JOHN NANNI

411 Winterberry Drive
Middletown, DE 19709
(302) 449-5346
John Nanni

STEPHAN FRANCISCO

1346 Choptank Road
Middletown, Delaware 19709
(302) 438-2849
Stephan Francisco

NEIGHBORS FOR MOORE

PO Box 742
Middletown, DE 19709
(302) 256-9313
Sherae'a Moore

SENATOR STEPHANIE HANSEN

820 N French St, 11th Floor
Wilmington, DE 19801
(302) 740-4979
Anna Shields

BETHANY HALL-LONG

150 Martin Luther King S. 3rd floor
Dover, DE 19901
(302) 378-8386
Bethany Hall-Long

INFORMATION TECHNOLOGY CONSULTING**RETHINKING CONSULTING SERVICES**

1015 15th Street NW
Washington, DC 20032
(202) 713-9130
David De Los Santos

INSURANCE**STATE FARM INSURANCE/ CHUCK MONTGOMERY**

384 East Main Street
Middletown, DE 19709
(302) 449-0001
Chuck Montgomery

MASS MUTUAL

15 Reads Way, Suite 210
New Castle, DE 19720
(302) 367-7620
Joshua Wilson

COLONIAL LIFE BENEFITS

5626 Kirkwood Highway
Orchard Commons Business Center
Wilmington, DE 19808
(302) 235-3088
Robert Roth

CROW INSURANCE AGENCY

106 South Broad St.
Middletown, DE 19709
(302) 378-9592
Jules Hendrix

LIBERTY MUTUAL INSURANCE

131 Continental Drive, Suite 108
Newark, DE 19713
(302) 444-9108
Catherine (Kitty) Lyons

DIAMOND STATE FINANCIAL GROUP

121 Continental Drive, Suite 110
Newark, DE 19713
(302) 366-0366
Neil Stalter, CFP®, ChFC®, RICP®, CBEC®

IFS BENEFITS, LLC

220 Continental Dr., Suite 209
Newark, DE 19713
302-652-2355 ex. 155
Patrick Fitzgerald

WOLFF INSURANCE AGENCY INCORPORATED

520 People's Plaza
Newark, Delaware 19702
(302) 283-1880
Peter Wolff

ALLSTATE - NICHOLS AGENCY

704 Ash Blvd.
Middletown, DE 19709
(302) 864-2230
Ryan Nichols

THE INSURANCE ARTIST, LLC

9700 Bunsen Parkway
Louisville, KY 40299
(502) 830-9176
Rob Holtzmann

FLEETWOOD INSURANCE GROUP

100 Talbot Blvd.
Chestertown, MD 21620
(410) 778-2260
Brett Davis

L&W INSURANCE

3705 Kennett Pike
Greenville, DE 19807
(302) 543-7121
Connor Brown

COMMERCIAL INSURANCE ASSOCIATES

260 Chapman Rd., Suite 100-B
Newark, DE 19702
(302) 286-7901
Travis Mozart

BRANDON PHILLIPS, NEW YORK LIFE

121 Bakerfield Dr.
Middletown, DE 19709
(302) 609-6424
Brandon Phillips

WHITE CLAY INSURANCE

630 Churchmans Rd., Suite 203
Newark, DE 19702
(302) 525-6720
Theodore Wolfer

DELAWARE VALLEY MEDIGAP

108 Patriot Dr, STE A
Delaware Valley Medigap
Middletown, DE 19709
(302) 487-1961
John Egger

BLUE HEN INSURANCE, LLC

1050 Industrial Drive, Suite 240
Middletown, DE 19709
(302) 696-2242
Tom Hernan

INVESTMENT**MASS MUTUAL**

15 Reads Way, Suite 210
New Castle, DE 19720
(302) 367-7620
Joshua Wilson

EFFICIENT FRONTIER GROUP

4353 Summit Bridge Road
Middletown, DE 19709
(302) 378-9103
Evan Ward

IT SOLUTIONS PROVIDER, COMPUTER & WEB SERVICES**RETHINKING CONSULTING SERVICES**

1015 15th Street NW
Washington, DC 20032
(202) 713-9130
David De Los Santos

LANDSCAPING**BAY COUNTRY LANDSCAPE**

2421 S Dupont Boulevard
Smyrna, DE 19977
(302) 368-0880
Len Eaton

BARTLETT TREE EXPERTS

108 wedge court
TOWNSEND, DE 19734
(302) 995-7562
Ron Kowalski

LAW FIRM**WARD & TAYLOR LLC**

242 Dove Run Boulevard
Middletown, DE 19709
(302) 225-3350
Carol Strouth

PARKWAY LAW, LLC

3171 DuPont Parkway, Suite B
Townsend, DE 19734
(302) 449-0400
Dominic Balascio

MORRIS JAMES LLP

500 Delaware Avenue, Suite 1500
Wilmington, Delaware 19801
(302) 888-6800
K Vansant

WOLFE & ASSOCIATES

122 Sandhill Drive, Suite 203
Middletown, DE 19709
(302) 644-1426
Erica Wolfe

THE DELAWARE ELDER LAW CENTER

3711 Kennett Pike, Suite 110
Wilmington, DE 19807
(302) 300-4390
W. Wade Scott

LONG & GREENBERG, LLC

501 Main Street
Odessa, DE 19730
(302) 466-5664
Elissa Greenberg

TIGHE & COTTRELL, PA

704 King St., Suite 500
Wilmington, DE 19801
(302) 658-6400
Melissa Rhoads

LAWN CARE SERVICE**RELEAF PROPERTY SERVICES**

251 Union Church Rd
Townsend, Delaware 19734
(302) 313-6924
Tim Beshore

LIQUOR**KRESTON WINE & SPIRITS**

448 East Main St.
Middletown, DE 19709
(302) 376-6123
Robert Kreston

LODGING

MILLER-DUNHAM BED & BREAKFAST

207 High Street
Odessa, DE 19730
(302) 378-0459
Jeff Hillwig

HAMPTON INN

117 Sandhill Dr.
Middletown, DE 19709
(302) 674-2200
Sophia Kramedas

HOLIDAY INN EXPRESS & SUITES

315 Auto Park Drive
Middletown, Delaware 19709
(302) 696-2272
Rishen Patel

MIDDLETOWN HOTEL LLC (FAIRFIELD INN MIDDLETOWN)

411 Merrimac Ave.
Middletown, Delaware 19709
Diane Gradel

MANUFACTURING

JUNIA HOLDINGS INC.

110 Sleepy Hollow Dr.
MIDDLETOWN, DE 19709
(302) 449-0199
Miki Edge

MARKETING/ADVERTISING SERVICES

THE DYNAMIC MARKETING INSIGHTS GROUP, INC.

THE DMI GROUP

364 East Main Street, Suite 411
Middletown, DE 19938
(302) 223-9448
Carl Pace

INSTANT IMPRINTS OF DELAWARE

62 Southgate Blvd, Suite A
New Castle, DE 19720
(302) 515-0207
Barbara Day

BRAVELY

664 Lewes Landing Road
Middletown, DE 19709
(410) 963-8338
Shane Santiago

MIDAS MEDIA

302-223-GOLD (4653)
Avi Gold

ZENBUSINESS

5511 Parkcrest Drive, Suite 103
Austin, TX 78731
(512) 765-4985
Ellen Sartin

PPI TELEVISION

3542 Three Little Bakers Blvd.
Wilmington, Delaware 19808
(302) 292-3994
Frank Cerniglia

PRESIDENTIAL GOLF DAY, LLC

651 N Broad St., Suite 306
Middletown, Delaware 19709
(315) 278-4998
Maria Jiverage

MARTIAL ARTS SCHOOLS

EVOLUTION KARATE ACADEMY

735 North Broad St.
Middletown, DE 19709
(302) 376-7100
Joe Kaluzny

FRANK FAMILY KARATE PLUS

100 West Green Street, Suite 300
Middletown, DE 19709
(302) 285-1010
Patricia Frank

MEDICAL

SUNWISE FAMILY DERMATOLOGY & SURGERY

Suite: 203, 102 Sleepy Hollow Drive
Middletown, DE 19709
(856) 912-1344
Jim LaRusso

ZENLIVEN LLC WELLNESS STUDIO

111 West Main St, Suite 200
Middletown, DE 19709
(302) 464-8825
Amanda Nauman

CEDAR SEE VISION CENTER, LLC

5435 Peterson Rd
Middletown, DE 19709
(302) 609-0041
Withney Korley

MERCHANT SERVICES

ONUS MERCHANT SOLUTIONS

212 W Main St, Suite#400
Salisbury, MD 21801
(908) 745-1337
Jaynish Patel

MERCANTILE PROCESSING INC.

32695 Roxana Rd.
Millville, DE 19967
(302) 524-8000
Casey Fitzgerald

MORTGAGE LENDING

UNION HOME MORTGAGE CORPORATION

200 Continental Drive, Ste 401
Newark, DE 19713
302-373-6718
Sheri Barber

PIKE CREEK MORTGAGE

120 Airmont Dr.
Middletown, DE 19709
(302) 318-0903
Jamie England

MOVING & STORAGE

DELAWARE MOVING & STORAGE, INC.

214 Bear Christiana Rd.
Bear, DE 19701
(302) 322-0311
Ed Kulesza

HOPKINS & SONS, INC.

1 Bellecor Dr.
New Castle, DE 19720
(302) 322-1017
Bryan Smallwood

MUNICIPALITY

THE TOWN OF MIDDLETOWN

19 West Green St.
Middletown, DE 19709
(302) 378-2711
Kristen Krenzer

TOWN OF TOWNSEND

141 Main Street
Townsend, DE 19734
302-378-8082
Antonina Tantillo

NETWORKING

TOASTMASTERS STANDING OVATION CLUB

1050 Industrial Drive
Middletown, Delaware 19709
(302) 598-9903
Angela Herbstritt

NEW HOME CONSTRUCTION

JS HOMES

1919 Red Lion Rd
Bear, DE 19701
302-838-8880 x 701
Bob Taylor

JEFFREY FOWLER GROUP DELAWARE REAL ESTATE SALES - KELLER WILLIAMS REALTY

37169 Rehoboth Avenue Ext, Unit 11
Rehoboth Beach, DE 19971
(302) 727-3013
Jeffrey Fowler-Gray

NEWSPAPER / PUBLISHING

DAILY STATE NEWS

110 Galaxy Drive
Dover, Delaware 19901
(302) 674-3600
Heather Cregar

WOMEN'S JOURNAL

P.O. Box 57
Lewes, DE 19958
(888) 550-7200
Pam Rizzo

NON-PROFIT

FIRST TEE - DELAWARE ED OLIVER GOLF COURSE

800 N. DuPont Road
Wilmington, DE 19807
(302) 384-8759
Leslie McGuigan

CORBIT-CALLOWAY MEMORIAL LIBRARY

115 High Street
P.O. Box 128
Odessa, DE 19730
(302) 378-8838
Katryna Cera-Proulx

FREEDOM CENTER FOR INDEPENDENT LIVING, INC.

105 Sleepy Hollow Drive, Ste. A
Middletown, DE 19709
(302) 376-4399
Jody Hougentogler

YMCA OF DELAWARE- MIDDLETOWN

404 N Cass St
Middletown, DE 19709
(302) 616-9622
Georganne Buccine

OUR DAILY BREAD DINING ROOM OF MOT, INC.

214 North Broad Street
Middletown, DE 19709
(302) 285-9540
Larry Norfleet

MIDDLETOWN HISTORICAL SOCIETY, INC.

216 North Broad St
Middletown, DE 19709
(302) 378-7466
Linda Harting

BETTER BUSINESS BUREAU SERVING DELAWARE

60 Reads Way
New Castle, DE 19720
(302) 221-5255
Christine Sauers

AMERICAN LEGION CANAL POST 25

510 American Legion Drive
Middletown, DE 19709
(302) 562-9665
Ray Abbott

TOWNSEND FIRE CO.- LADIES AUXILIARY

107 Main St.
Townsend, DE 19734
(302) 378-8111
Michelle Argoe

APPOQUINIMINK FOUNDATION

118 S Sixth Street
Odessa, DE 19730
(302) 753-6301
Amar Tailor

MIDDLETOWN-ODESSA-TOWNSEND ROTARY CLUB

P.O. Box 201
Middletown, DE 19709
(302) 378-1181

MOT SENIOR CENTER

300 S. Scott Street
Middletown, DE 19709
(302) 378-4758
Cecilia DeFazio

ROTARY CLUB OF SOUTHERN NEW CASTLE COUNTY

P.O. Box 91
Odessa, DE 19730
(302) 378-0159
Club President

SCORE DELAWARE

1105 Market Street, Lobby Level 02
Wilmington, DE 19801
(302) 661-2366
William Roberson

AUTISM DELAWARE

924 Old Harmony Rd, Suite 201
Newark, DE 19713
302-224-6020
Brian Hall

DELAWARE COMMUNITY FOUNDATION

100 W. 10th st., Suite 115
Wilmington, DE 19801
302-571-8004
Rebecca Elzey

A DOOR OF HOPE

316 E. Main Street
Middletown Crossing III
Middletown, DE 19709
302-394-9500
Rhonda Silvestri

THRIVE REAL LIFE INDEPENDENCE

108 PATRIOT DR STE A
MIDDLETOWN, Delaware 19709
(302) 379-1965
Joseph Richichi

HABITAT FOR HUMANITY NEW CASTLE COUNTY

3312 Seminole Avenue
Wilmington, Delaware 19808
(302) 652-5181 x102
Jeff Long

JOBS FOR DELAWARE GRADUATES, INC.

381 West North Street
Dover, DE 19904
(302) 734-9341
Nicole Poore

UNIQUE BUSINESS SOLUTIONS

26 Airdrie Drive
Clairborne at Lexington Farms
Bear, DE 19701
(302) 750-0930
Jeanette Waters

DEEP ROOTS, INC.

21 Veazey Cove Road
Earleville, MD 21919
(410) 275-2194

DELAWARE SMALL BUSINESS DEVELOPMENT CENTER

1 Innovation Way, Suite 301
Newark, Delaware 19711
302-831-1555
Stephanie O'Leary

DELAWARE SAFETY COUNCIL

2 Penns Way #201
New Castle, DE 19720
(302) 276-0660
Stacey Inglis

EASTERSEALS DELAWARE & MARYLAND'S EASTERN SHORE, INC.

61 Corporate Circle
New Castle, Delaware 19720
(302) 221-2053
Kelly Doty

VETERANS WATCHMAKER INITIATIVE

307 N. 6th Street
Odessa, DE 19730
(302) 465-2421
Sam Cannan

DELAWARE HOSPICE

16 Polly Drummond Center, 2nd Fl.
Newark, DE 19711
(302) 478-5707
Kathleen Wood

AMERICAN CANCER SOCIETY

37119 Saber Court
Greenbackville, VA 23356
(304) 694-4563
Ashley Riley

STATE OF DELAWARE - DIVISION FOR THE VISUALLY IMPAIRED

1901 N DuPont Hwy
Biggs Building, Door 3
New Castle, DE 19720
1-302-255-9822
Jamie Towns

EFFICIENCY SMART

123 Richards Lane
Newark, DE 19711
(302) 396-0169
Carolyn Dehorty

NEIGHBORHOOD HOUSE, INC.

811 North Broad Street, Suite 219
Middletown, DE 19709
(302) 378-7217
Tom Ward

GRATEFUL ACRES, INC. NON-PROFIT 501C3

697 Vance Neck Rd
Middletown, DE 19709
1-302-464-8847
Allyson Kennedy

COMMUNITY INTEGRATED SERVICES

18 West Main Street
Middletown, DE 19709
(302) 376-8259
Keith Bosco

DD PROJECT WINES/ DD ENTREPRENEURIAL

FOUNDATION
107 Lynn Circle
Middletown, DE 19709-9253
(302) 528-3485
Carla Briccotto

GREATER WILMINGTON CONVENTION & VISITORS BUREAU

100 West 10TH St., Suite #20
Wilmington, DE 19801
(302) 652-4088
Sarah Willoughby

MIDDLETOWN JAYCEES

P.O. Box 915
Middletown, DE 19709
Tina Macko

MIDDLETOWN MAIN STREET

216 N Broad Street
Middletown, DE 19709
(302) 378-2977
Kate Rokosz

MIDDLETOWN BUSINESS ASSOCIATES

1050 Industrial Drive, Suite 110
Middletown, DE 19709
(302) 766-0982
Pete Ramos

DELAWARE UNION SOCCER

PO Box 545
Middletown, Delaware 19709
(302) 235-3144
Tara O'Brien

NON-PROFIT / CHURCH**VETERAN'S OUTREACH MINISTRIES**

2200 Glasgow Avenue
Newark, DE, DE 19702-3902
(302) 229-1819
Thomas Hogate

CONNECTION COMMUNITY CHURCH

4744 Summit Bridge Road
Middletown, DE 19709
(302) 378-7692
Alan Jones

REAL LIFE COMMUNITY CHURCH

938 Middletown Warwick Rd
Middletown, DE 19709
(302) 378-6133
Deanna Pierce

EL SHADDAI CHRISTIAN MINISTRIES INC.

311 Joan Drive
Bear, DE 19701
(302) 761-3286
Pastor Glenn Ahrens

THE JOURNEY - MIDDLETOWN LOCATION C/O MIDDLETOWN

LOCATION
721 E Chestnut Hill Road
Newark, DE 19713
(302) 738-2892
James Copeland

MARKINC MINISTRIES

PO Box 7147
Newark, DE 19714
(302) 838-2755
Danielle Cantler

OFFICE & WAREHOUSE RENTAL

DELAWARE INDUSTRIES, INC.
9 Wood St.
Middletown, DE 19709
(302) 378-8974
Jay Walls

KRM DEVELOPMENT CORPORATION

205 Cannon Street, Suite 1
Chestertown, MD 21620
(410) 810-1574
Marley Gladden

OFFICE EQUIPMENT, SALES & SERVICE**EXCEL BUSINESS SYSTEMS**

201 Ruthar Dr., Suite 10
Newark, DE 19711
(302) 453-1500
Frank Montisano

ONLINE BUSINESS**NICKLES ARCADE, LLC**

356 Norwalk Way
Middletown, Delaware 19709
(513) 604-1277
Jeremy Fink

OPTOMETRY & OPTICAL**SIMON EYE**

472 East Main St.
Middletown, DE 19709
(302) 239-1933
Tina Satterfield

DELAWARE OPHTHALMOLOGY CONSULTANTS

272 Carter Dr., Suite 100
Middletown, DE 19709
(302) 479-3937
Sandy Fasano

CEDAR SEE VISION CENTER, LLC

5435 Peterson Rd
Middletown, DE 19709
(302) 609-0041
Withney Korley

ORTHODONTICS**ANZILOTTI ORTHODONTICS-CLIFFORD L. ANZILOTTI, DMD PA**

112 St. Anne's Church Rd.
Middletown, DE 19709
(302) 378-2778
Heather McCleery

DELAWARE ORTHODONTIC

122 Sandhill Drive Suite 201
Middletown, DE 19709
(302) 449-1350
Kathleen Pacana

PAINTING**HAMPTON ENTERPRISES OF DELAWARE INC.**

413 Prestwick Place
Townsend, DE 19734
(302) 378-7365
LaMont Hampton

MPC-MAYSE PAINTING & CONTRACTING

213 Clydia Court
Middletown, DE 19709
(443) 553-6503
Krista Mayse

PAINT DOCTOR

99 Albe Dr, Suite A
Newark, DE 19702
(302) 454-6400
Richard Edwards

CERTAPRO PAINTERS OF DELAWARE

405 Old DuPont Rd.
Wilmington, DE 19804
(302) 212-5742
Denise Garvey

COWBOY PAINTING COMPANY LLC

704 Middletown Warwick Road
Middletown, DE 19709
(302) 304-5574
Samuel Cochran

PAINT DOCTOR INC.

99 Albe Dr., Suite A
Newark, DE 19702
(302) 454-6400
Stacy Edwards

PAYROLL SERVICES**PURSERS OFFICE INC.**

1050 Industrial Drive, Suite 110
Middletown, DE 19709
(302) 239-9788
Rollyn Trueblood

PEST MANAGEMENT**HOFFMAN EXTERMINATING**

5169 Summit Bridge Road, Unit 2
Middletown, DE 19709
(302) 836-5445
Sonny Pacana

PET SERVICES**MIND YOUR PAWZ**

1095 Leeds Road
Elkton, MD 21921
(443) 406-6001
Angie Greenway

AMERICAN K-9 DOGGIE DAYCARE & TRAINING, LLC

112 Patriot Drive, Suite F
Middletown, DE 19709
(302) 376-9663
Laurie Brown

THE DOG STOP OF MIDDLETOWN

108 Sleepy Hollow Drive
Middletown, DE 19709
(302) 376-9006
Jim Henry

PHOTOGRAPHY**BOB GOSSELIN PHOTOGRAPHY**

213 Lime Landing Rd.
Millington, MD 21651
(410) 604-1195
Bob Gosselin

302 MEDIA, LLC

8 The Green, Suite 7584
Dover, DE 19709
(302) 535-4268
Mike Windley

MIDAS MEDIA

302-223-GOLD (4653)
Avi Gold

ANDREAS STAHL PHOTOGRAPHY

100 Tuscany Dr
Middletown, DE 19709
(302) 563-5394
Andreas Stahl

JANE MRUK PHOTOGRAPHY

115 S. Sixth Street, Suite #4
Odessa, DE 19730
(302) 668-9141
Jane Mruk

JOHN FALLA PHOTOGRAPHY

Main St
Odessa, DE 19730
(484) 354-4865
John Falla

ERIC CROSSAN PHOTOGRAPHY

Serving All Of Delaware
(302) 378-1700
ERIC CROSSAN

PHYSICAL THERAPY**PREMIER PHYSICAL THERAPY & SPORTS PERFORMANCE**

210 Cleaver Farm Rd., Suite 1
Middletown, DE 19709
(302) 449-2048
Jen Atwood

THRIVE PHYSICAL THERAPY

834 Kohl Ave.
Middletown, DE 19709
(302) 834-8400
Carolyn Calvey

PLUMBING**ESQUIRE PLUMBING & HEATING CO.**

7 Wood Street
Middletown, DE 19709
(302) 378-7001
Virginia Briccotto

PRESSURE WASHING**BRIGHT HOME DELAWARE**

543 Diamond Drive
Middletown, DE 19709
(302) 864-2121
Carl Zitofsky

CASEPRO LLC COMMERCIAL POWER WASH

36 E. Sarazen Drive
Middletown, DE 19709
(302) 561-7031
Ernest Frazier

SCREEN MASTERS

303 Holly Lane
Middletown, DE 19709
(302) 293-9151
Shawn Tiller

PRINTING**DELMARVA PRINTING CO.**

2110 Windsor Drive
Salisbury, MD 21801
(410) 912-0980
Don Hitchens

PRINTING & MAILING**COLORTEC PRINTING AND MAILING LLC**

521 Irish Hill Rd, Ste B
Runnemede, NJ 08078
(856) 767-0108
Lori Burroughs

ALPHAGRAPHICS - BEAR

140 Fox Hunt Dr
Bear, DE 19701
(302) 353-4400
Ujval Shah

PROPERTY MANAGEMENT**STANLEY PROPERTIES, LLC**

PO Box 267
Odessa, DE 19730
(302) 376-8800
Carolyn Stanley

ASSET MANAGEMENT ALLIANCE

222 Delaware Ave, Suite 109
Wilmington, DE 19801
302-655-2100
Rachael Odle

SECURE MANAGEMENT, INC.

1050 Industrial Drive, Suite 100
Middletown, DE 19709
(302) 999-8342
Diane Kowalski

DELAWARE PREMIER PROPERTY MANAGEMENT, LLC

56 W Main Street, Ste 101
Christiana, DELAWARE 19702
(302) 355-1880
Christina Quinn

PREMIER PROPERTY AND POOL MANAGEMENT

106 Sandhill Drive, Suite 3
Middletown, DE 19709
(302) 449-2230
Alicia Menefee

DSM COMMERCIAL

3304 Old Capitol Trail
Wilmington, DE 19808
(302) 283-1800
Accounts Payable

REAL ESTATE**KELLER WILLIAMS REALTY - WILL WEBBER**

1318 Barksdale Road
Newark, Delaware 19711
302-354-0600
Will Webber

THE MEGAN AITKEN TEAM, KELLER WILLIAMS REALTY

401 E. Main St., Suite B, Bldg 4
Middletown, DE 19709
(302) 528-9124
Beth Oliphant

COMPASS REAL ESTATE

525 Gum Bush Rd
Townsend, DE 19734 (302) 584-3279
Candice Santoro

HELPING ONE MORE ENTREPRENEUR

108 Patriot Drive, Suite A
Middletown, DE 19709
(302) 261-3530
Joseph Richichi

PATTERSON SCHWARTZ REAL ESTATE

4417 Summit Bridge Rd.
Middletown, DE 19709
(302) 285-5100
Dave Watlington

KEVIN HENSLEY-RE/MAX ASSOCIATES

P.O. Box 326
Middletown, DE 19709
(302) 218-0130
Kevin Hensley

TOWN OF WHITEHALL

900 Lorewood Grove Rd.
Middletown, DE 19709
(302) 376-8699
Ronald Myers

TEAM O'DONNELL - EXP REALTY

11 Parkway Circle, Suite 200
New Castle, DE 19720
(302) 598-0189
David O'Donnell

RESERVE AT SOUTH RIDGE

1600 Lake Seymour Drive
Middletown, DE 19709
(302) 449-2800
Jessica Lazartic

SWALM REALTY

364 E. Main St., Suite 313
Middletown, DE 19709
(302) 293-4164
Jamie Swalm

PREM, INC. - PHOENIX REAL ESTATE

1050 Industrial Drive, Suite 110
Middletown, Delaware 19709
Michael Davis

R&R COMMERCIAL REALTY

46 South State Street
Dover, DE 19901
(302) 674-3400
Ian Gronau

JEFFREY FOWLER GROUP DELAWARE REAL ESTATE SALES - KELLER WILLIAMS REALTY

37169 Rehoboth Avenue Ext, Unit 11
Rehoboth Beach, DE 19971
(302) 727-3013
Jeffrey Fowler-Gray

DSM COMMERCIAL

3304 Old Capitol Trail
Wilmington, DE 19808
(302) 283-1800
Accounts Payable

DELAWARE REALTY GROUP

37 S Main Street
 Middletown , DE 19709
 (302) 685-4042
 Ray Petkevis

MELISSA SCOTT REALTOR® WITH EXP REALTY

Middletown, Delaware 19709
 (302) 373-5930
 Melissa Scott

ANDREA HARRINGTON & ASSOCIATES

240 Dove Run Centre Dr.
 Middletown, DE 19709
 (302) 383-7575
 Andrea Harrington

PATTERSON SCHWARTZ

7234 Lancaster Pike, Suite 100
 Hockessin , DE 19707
 (302) 743-1000
 Debbie Pippin

THYME REAL ESTATE CO.

104 W Main St, Suite. B
 Middletown , DE 19709
 (302) 449-1422
 Kim Simpson

RE/MAX 1ST CHOICE

100 S. Broad St.
 Middletown, DE 19709
 (302) 378-8700
 Patricia Shores

RECREATION**ELLIGAIL CHARTERS**

5573 Boundary Ave.
 Rock Hall, MD 21661
 (443) 480-1804
 Chuck Woodfield

REHABILITATION**CADIA REHABILITATION BROADMEADOW**

500 South Broad St.
 Middletown, DE 19709
 (302) 449-3400
 Tracy Broomall

ENCOMPASS HEALTH REHABILITATION HOSPITAL OF MIDDLETOWN, LLC

250 East Hampden Road
 Middletown, DE 19709
 (302) 464-3400
 Christie Watlington

RESTAURANT**CANTWELL'S TAVERN**

109 Main St..
 Odessa, DE 19730
 (302) 376-0600
 Megan Saona

CHESAPEAKE INN RESTAURANT

605 2nd St.
 Chesapeake City, MD 21915
 (410) 885-2040
 Gianmarco Martuscelli

CHICK-FIL-A MIDDLETOWN (DE)

701 S. Ridge Avenue
 Middletown, DE 19709
 (302) 376-7700
 Kevin Wood

SELECT PIZZA AND GRILL

311 N. Broad Street
 Middletown, DE 19709
 (302) 378-4500
 Cathy L. Escherich

DUKART MANAGEMENT / MCDONALD'S

580 Middletown Warwick Rd.
 Middletown, DE 19709
 (302) 378-3936
 Mike Dukart

TOM FOOLERY'S

714 Ash Blvd
 Middletown, Delaware 19709
 3024492211
 Stacy Fimmano

CARUSO'S BISTRO

264 Dove Run Boulevard
 Middletown, DE 19709
 (302) 449-0000
 Melissa Trinidad

JAMESTOWN HOSPITALITY GROUP

2506 W 5th St
 Wilmington, DE 19805
 (302) 696-5652
 April Doughty

CROOKED HAMMOCK BREWERY - LAVIDA HOSPITALITY

316 Auto Park Dr
 Middletown, Delaware 19709
 (302) 644-7837
 Emily Fitzgerald

TWO STONES PUB

840 Kohl ave
 Middletown, Delaware 19709
 (302) 378-8199
 Michael Stiglitz

MULLIGAN'S

631 Bayview Road
 Middletown, DE 19709
 (302) 464-1012
 Dawn Witte

HAAGEN-DAZS OF MIDDLETOWN

7 W Main Street
 Middletown, DE 19709
 1-302-223-2889
 James Henry

CURRY AND SPICE BAR

814 Kohl Ave
 Middletown, DE 19709
 (302) 696-2103
 Mirunalini Mayur Parthasarathy

TACO REHO

100 Sandhill Drive
 Middletown, DE 19709
 (302) 598-8604
 Kelly Repka

ROYAL KITCHEN INC

516 South Street, Unit-516
 New Castle , DE 19720
 (302) 544-6192
 Jesse Singh

FRESHLEAF SALADS (DBA SALADWORKS)

494 EAST MAIN ST
 MIDDLETOWN, DE 19709
 (302) 220-9900
 Sandy Webb

FRATELLI'S ITALIAN SPECIALTY

2392 Dupont Parkway
 Middletown, DE 19709
 (302) 407-4367
 Mario Castelli

ODESSA NATIONAL GOLF CLUB

1131 Fieldsboro Rd.
 Townsend, DE 19734
 (302) 464-1007
 Dale Loeslein

BRINKER CHILIS

501 Merrimac Ave
 Middletown, Delaware 19709
 (908) 902-1531
 GianCarlo Victorio

LUNA'S PIZZERIA AND ITALIAN GRILL

830 Kohl Ave
 Middletown, Delaware 19709
 (302) 301-6161
 Rob Davis

RETAIL**ONUS MERCHANT SOLUTIONS**

212 W Main St, Suite#400
 Salisbury, MD 21801
 (908) 745-1337
 Jaynish Patel

PARTY OF SIX MARKETING

303 Norwalk Way
 Middletown, DE 19709
 (573) 586-8532
 Amy Holloway

MARIE PAIGE BOUTIQUE

5427 Peterson Rd
 Middletown, DE 19709
 (302) 660-3299
 Jenn Whyland

CLOUD IX BALLOON BAR & EVENT RENTALS, LLC

600 N. Broad Street, Unit 10
 Middletown , DE 19709
 (302) 465-8690
 Marissa Guasperini

RETAIL/CLOTHING**MARIE PAIGE BOUTIQUE**

5427 Peterson Rd
 Middletown, DE 19709
 (302) 660-3299
 Jenn Whyland

ROOFING CONTRACTORS**APPLE REMODELING**

614 South Street
 Townsend, DE 19734
 (302) 333-7395
 Phillip Concha

KIRKIN EXTERIORS

1053 Lower Twin Ln Rd
 New Castle, DE 19720
 (302) 832-7663
 Dan Rankin

MOT ROOFING LLC

12 E. Green St.
 Middletown, DE 19709
 302-598-9717
 Lisa Poore

PADDY'S, LLC

5207 Summit Bridge Road
 Middletown, DE 19709
 (302) 388-3625
 Kelly Ferris

AMATO ROOFING AND SIDING

571 Walnut Street
 Townsend , DE 19734
 (302) 419-8557
 Anthony Chambers

SEALCOAT SERVICES**MOORE SEALCOAT & STRIPING**

204 Morris Rd.
 Townsend, DE 19734
 (302) 653-7325
 David Lewis

SECURITY**ARK SYSTEMS**

9176 Red Branch Rd, J-2
 Columbia, Maryland 21045
 (443) 973-1835
 Bryan Stone

STRATEGIC SECURITY SOLUTIONS GROUP LLC (S3G)

120 Lahinch Court
 Middletown, DE 19709
 (302) 270-4082
 Jim Warwick

SEPTIC, PORTABLE TOILETS**A-1 SANITATION SERVICE INC.**

1009 River Rd.
 New Castle, DE 19720
 (302) 322-1074
 Steven Smierka

SIGNS**ALPHAGRAPHS - BEAR**

140 Fox Hunt Dr
 Bear, DE 19701
 (302) 353-4400
 Ujval Shah

STAFFING

1ST STATE STAFFING SOLUTIONS, LLC

112 S. French Street
Wilmington, DE 19801
(302) 285-9044
Gary Carter

STORAGE

A STORAGE DEPOT

730 Hedgelawn Way
Middletown, DE 19709
(302) 376-5696
Nicole Blank

SURVEYING

CLIFTON L. BAKHSH, JR., INC.

4450 Summit Bridge Road
Middletown, DE 19709
(302) 378-8009
Sue Bakhsh

TECHNOLOGY

DIAMOND TECHNOLOGIES

4001 Miller Road
Suite 3, 2nd Floor
Wilmington, DE 19802
(302) 485-1841

RAM TECH SYSTEMS, INC

1050 Industrial Drive, Suite 110B
Middletown, DE 19709
(302) 832-6600
Sriini Lokula

DRIVE PHASE CONSULTING LLC

108 Patriot Drive, Suite A
Middletown, DE 19709
(302) 303-7500
Xan Hong

TELECOMMUNICATIONS

EXERCOMM, INC.

335 Jessica Drive
Middletown, DE 19709
(302) 438-6130
Keith Yocum

THEATER

WESTOWN MOVIES

150 Commerce Drive
Middletown, DE 19709
(302) 378-2436
Art Helmick

THE EVERETT

47 West Main St.
Middletown, DE 19709
(302) 378-7038
Kim Court

TOWING, HAULING, AUTO GLASS

BETTS GARAGE B&G GLASS CO., INC.

2806 Pulaski Hwy.
Newark, DE 19702
(302) 834-2284
David Betts, Jr.

TRAILER SALES & GOLF CARTS

FOUR ACRES TRAILER SALES, INC.

2009 West Newport Pike
Wilmington, DE 19804
(302) 994-1500
Joyce Prettyman

TRANSMISSION SERVICES

POWER TRANSMISSION SERVICES, INC.

501 Industrial Drive
Middletown, DE 19709
(302) 378-7925
Rick Russell

TRANSPORTATION

HAPPY HANDS AND FEET KIDZ TRANSPORTATION, LLC

262 CHAPMAN RD, STE 221
Newark, DE 19702
(302) 897-2375
Jessica Davis

DELAWARE TRANSIT CORPORATION

119 Lower Beech Street
Wilmington, DE 19805
(302) 576-6002
L. Albert Loyola

TRUCK STOP & GAS STATION

301 PLAZA, INC.

921 Middletown Warwick Rd.
Middletown, DE 19709
(302) 376-4301
Martin Sevcik

UNIONS

CARPENTERS LOCAL 255

626 Wilmington Rd.
New Castle, DE 19720
(302) 328-9439
Sam Noel

UTILITIES

CHESAPEAKE UTILITIES CORPORATION

500 Energy Lane, Suite 100
Dover, DE 19901
(302) 736-7846
Vincent Fiorelli

ARTESIAN WATER COMPANY, INC.

664 Churchmans Road
Newark, DE 19702
(302) 453-6900
Courtney Emerson

SHARP ENERGY

5011 N. Dupont Highway
Dover, DE 19901
(302) 678-2400
Catherine Hutchison

SILVER RUN ELECTRIC LLC LS POWER DEVELOPMENT LLC

16150 Main Circle Drive, Suite 310
St. Louis, MO 63017
636 532 2200
Nicholas Schwarzbach

EFFICIENCY SMART

123 Richards Lane
Newark, DE 19711
(302) 396-0169
Carolyn Dehorty

CQI ASSOCIATES, LLC

10729 B Birmingham Way
Woodstock, MD 21804
(443) 472-3870
Joe Tabeling

SCHAGRIN GAS CO.

1000 N. Broad St.
Middletown, DE 19709
(302) 378-2000
Andy Lambert

VERTERINARY MEDICAL SERVICES

COMPANION ANIMAL VETERINARY ASSOCIATES

5360 Summit Bridge Rd, Suites 2 & 3
Middletown, DE 19709
(302) 464-1255
Michelle Crosier

MIDDLETOWN VETERINARY HOSPITAL

366 Warwick Rd.
Middletown, DE 19709
(302) 378-2342

VIDA VETERINARY URGENT CARE

300 S Ridge Ave.
Middletown, DE 19709
(302) 676-8432
Sandra Stacey

VIDEO PRODUCTIONS

PJVIDEOFILM.COM

Townsend, DE 19734
(215) 280-1212
Paul Joslow

WASTE MANAGEMENT

WASTE MASTERS SOLUTIONS

19 Davidson Lane
New Castle, DE 19720
(302) 530-1742
Deborah Henderson

WASTE INDUSTRIES

604 Cannery Ave
Townsend, DE 19734
302-378-5400
Robin Adkins

TRASH TECH

755 Governor Lea Road
New Castle, Delaware 19720
(302) 832-8000
Kevin Liebman

DUMP IT

420 Boyds Corner Road
Middletown, DE 19709
(302) 378-7373
Brande Cipolloni

WEALTH MANAGEMENT

DIAMOND STATE FINANCIAL GROUP

121 Continental Drive, Suite 110
Newark, DE 19713
(302) 366-0366
Neil Stalter, CFP®, ChFC®, RICP®, CBEC®

WEDDING PLANNING

BALLROOM AT WINDSOR - MCCARTHY TREE FARM

1061 Dutch Neck Rd
Middletown, DE 19709-9493
1-302-836-3171
Lynette McCarthy

MOMENTS BY BELLA MONROE, LLC

808 Sweet Hollow Ct
MIDDLETOWN, DE 19709
(302) 465-8690
Marissa Guasperini

WHOLESALE CLUB

COSTCO WHOLESALE

900 CENTER BLVD.
NEWARK, DE 19702
(302) 444-9312
Le'Cinda Waugh

WHOLESALE DISTRIBUTOR

DECISION DISTRIBUTION AMERICA, LLC

4548 Market Street, Suite 215
Philadelphia, PA 19139
(215) 493-4400
Jack Daniels

WINERY

CROW FARM-VINEYARD & WINERY

12441 Vansants Corner Road
Kenndyville, MD 21645
(302) 304-0551
Judy Crow

CHATEAU BU-DE WINERY, BOHEMIA MANOR FARM

237 Bohemia Manor Farm Lane
Chesapeake City, MD 21915
(410) 885-2500
Brenda Dedrick

HARVEST RIDGE WINERY

447 Westville Rd
Marydel, DE 19964
(302) 343-9437
Alexis Nunan



A MESSAGE FROM THE EXECUTIVE DIRECTOR

Greetings!

I hope this letter finds you well and thriving within our vibrant community. As the Executive Director of the Middletown Area Chamber of Commerce (MACC), I am writing to express my gratitude for your continued support and to provide you with an update on our ongoing initiatives. First and foremost, we would like to extend our heartfelt appreciation to each member of our Chamber community. Your active involvement and commitment have played a crucial role in making Middletown a welcoming and inclusive place for all. Together, we have achieved a thriving community in which businesses are embraced and supported, fostering a sense of unity and shared purpose. In the spirit of collaboration, we are excited to announce several upcoming projects aimed toward supporting our small businesses, entrepreneurs and enhancing the quality of life within our community:

- **Business Community Center:**
Conveniently located at 651 N. Broad Street, the Middletown Area Chamber of Commerce is thrilled to be at the center of connecting our residents to our local businesses and the services they provide. We are growing our footprint and await the opportunity to help you discover businesses invested in our community.
- **Business Incubator & Collaborative Workspace:**
With the opening of our new business center, we are doubling the number of businesses we can serve in our Middletown Business Incubator & Collaborative Workspace (MBI) which provides entrepreneurs, business owners and our community leaders with office solutions. From professional mailboxes for home-based businesses, to office spaces and room rentals, we are dedicated to fostering economic growth for the MOT and surrounding areas.
- **Community Outreach:**
In an additional effort to connect our businesses and residents, we are designing new community focused events. Stay tuned for additions to our calendar of events designed to bring neighbors together, encourage connections and create lasting memories.
- **Business Resources:**
The MACC is committed to enhancing available resources and educational opportunities for your business. Whether you are starting up or looking to advance your existing business, the Chamber is here to provide resources including: online tutorials, step by step guidance, developed learning courses and targeted presentations. In collaboration with local and statewide organizations, we are here to assist you in achieving even more in 2024!

As we move forward, we invite you to join us in shaping the future of our community. Your involvement is instrumental in keeping Middletown a desirable place to live, work and play. Please visit us at the Middletown Area Chamber of Commerce to learn more about our business community, resources and upcoming opportunities for you and your business.

Thank you once again for your unwavering support!

Yours in service,

Michelle Hummel
Executive Director
Middletown Area Chamber of Commerce





AT ALL THERAPY

Physical Therapy & Wellness

Movement is *freedom*™

**ORTHOPAEDIC INJURIES
DANCE & SPORTS INJURIES
INJURY PREVENTION EDUCATION**

Accepting New Patients • Comprehensive Evaluations
Most Insurance Accepted
Servicing ALL Age Groups • Flexible Hours
Same Day Appointments • Free On-Site Parking
Free Transportation



101 North Broad Street,
Middletown, DE 19709
Phone: (302) 376-5578
Fax: (302) 376-5580
contactus@alltherapy.net

www.alltherapy.net



Real Estate Law



Estate Planning



Business Law



Incorporation Services



Probate Services



MIDDLETOWN | ODESSA | TOWNSEND | DOVER | LEWES | WILMINGTON



PARKWAY LAW

The Way to All Your Legal Needs

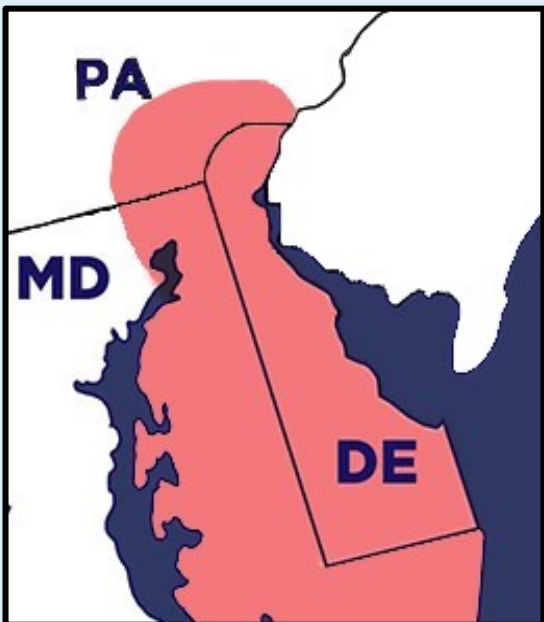
(302) 449-0400

WWW.PARKWAY-LAW.COM



We provide a wide variety of sanitation services including:

- ✓ Portable Toilet & Handicap Toilet Rentals
- ✓ Special Event Toilets & Portable Sink Rentals
 - ✓ Elegant Restroom Trailer Rentals
 - ✓ Septic & Grease Trap Pumping
 - ✓ 20' Storage Container Rentals
- ✓ Fresh & Waste Water Systems for Construction Trailers



Visit our website today!
www.a1sanitation.com



Betts

GARAGE

Towing & Hauling



Newark, DE

302-834-2284

WWW.BETTSGARAGE.COM

© 2013 EXCEL SPORTSWEAR



MBI

Middletown Business Incubator
& Collaborative Workspace



OFFICE SPACE RENTAL AVAILABLE NOW

Incubator & Collaborative Workspaces

- Professional Office Space Rentals
- Drop In Professional Space
- Daily Office Space Rentals
- Conference Room Rentals
- Private Mailbox & Business Address



CONTACT US FOR MORE INFORMATION



302.378.7545
651 N. Broad Street
Middletown, DE 19709
www.maccde.com

